



**FREE  
GUIDE**  
Please  
pick up

Art Fair East : Assembly House, Norwich : 7-10 November 2024

King's Lynn Literature Festival : King's Lynn Town Hall : 27/28/29 September 2024

Bayfield Sculpture Trail : Bayfield, North Norfolk : 18 September to 20 October 2024

Dozens more exhibitions and events at venues, galleries & studios in Norwich and Norfolk

# ART & CULTURE

## IN NORWICH & NORFOLK

A directory of arts and culture venues, groups and listings of exhibitions and cultural events in Norwich, Great Yarmouth, King's Lynn, Diss, Cromer, North & South Norfolk and beyond

August '24 to March '25

# Exhibitions at a glance : August '24 to March '25

Please use this calendar as a quick month-by-month reference to forthcoming shows. Darker bands indicate shows which run across more than one month.

Ongoing exhibitions		page
Until 31 October	Antony Gormley : Houghton Hall, West Norfolk	63
Until 29 Sept	Magdalene Odundo : Houghton Hall, West Norfolk	
Until 22 Sept	Sunlight, Roger Ackling : Norwich Castle	
Until 20 October	The Camera Never Lies : Sainsbury Centre, UEA Campus	
Until 7 September	Heavy Water Collective: GroundWork Gallery, King's Lynn	25
Until 8 September	Raveningham Sculpture Trail : Raveningham, South Norfolk	
Until 4 Sept	Summer Show : Bircham Gallery, Holt, North Norfolk	18
Until 5 October	Ceramics : Mandell's Gallery, Norwich	27
To 12 January 2025	Daniel & Clara : Norwich Castle	37
To February 2025	Holding Space : Norwich Castle	37
To June 2025	Catherine Maude Nichols : Norwich Castle	37
AUGUST 2024		page
Through August	Miranda Byk : Moosey Art Gallery, Norwich	29
7-29 August	Undercroft Gallery, Norwich : Lonely Arts Club	53
10-31 August	Grace Adam : Mandell's Gallery, Norwich	27
17-31 August	Print Cromer : Cromer Artspace on the Prom, Cromer, N.Norfolk	20
19 August	Lino Cut workshop : Cromer Artspace on the Prom	20
21/28 August	Print & Prosecco : Cromer Artspace on the Prom	20
22 August	Poetry with James McDermott, Cromer Artspace on the Prom	20
23 August	Artists in Conversation : Cromer Artspace on the Prom	20
24 August	Family Workshops : Cromer Artspace on the Prom	20
27 August	Children's Letterpress : Cromer Library, Cromer, North Norfolk	20
SEPTEMBER 2024		page
In September	Anmar Mirza : Moosey Art Gallery, Norwich	29
In September	Rebecca Foster-Clarke : Moosey Art Gallery, Norwich	29
4-15 September	Thin Places : Cromer Artspace on the Prom, Cromer, North Norfolk	20
7 Sept-2 October	Bircham Gallery, Holt : Liminal Gestures	18
7 Sept-5 October	Ichi-Go Ichi-E : Mandell's Gallery, Norwich	27
7/8 September	St Etheldreda's Heritage Open weekend	49



Cover image:  
Detail of  
Gennadiy Ivanov  
Self Portrait

## Note from the editor:

### Welcome to Art in Norwich, Norfolk and beyond

Summer is finally here, for a while at least and then we head into the autumn. Festival season is coming to an end, except the Autumn Festival of Norfolk which is running events, including the Norfolk Arts Awards, through September to end of November – see page 15. Hopefully some of the exhibitions and events listed here will get you out and about, enjoying the talent of the region.

The Sainsbury Centre continues its season of Big Questions with 'Why Do We Take Drugs?' looking into the effects and impacts of various kinds of mind-changing substances in different cultures.

Norwich Castle is poising itself for the reopening of the Keep following a multi-million pound refurbishment with the new entrance with shop, café and atrium now open to the public.

The annual and ever-popular Art Fair East has changed venues this year and will be found at the Assembly House from 7-10 November with works for sale, timely for Christmas (page 14).

Mandell's Gallery exhibits a wide range of artists, both locally-based and from further afield. This year they are hosting a fundraising exhibition for Creative Odyssey CIC, selling postcard sized works anonymously for £40 each through an exhibition in November, also good for Christmas gifts.

SEPTEMBER 2024 continued		page
7/8 September	Heritage Open Days – across Norfolk	61
14 Sept–29 November	Autumn Festival of Norfolk	15
14 Sept–2 February	Sainsbury Centre, Norwich : Power Plants	46
14 Sept–2 February	Sainsbury Centre, Norwich : Ayahuasca & Art of the Amazon	46
16–21 September	Brian Hagger Exhibition : Fairhurst Gallery, Norwich	22
17 Sept–21 November	Primeyarc, Great Yarmouth : Luke Gottelier	42
18 Sept–20 October	Bayfield Sculpture Trail, North Norfolk	16
19 September	ncas talk : David Reekie : Norwich School, Norwich 7pm	34
21 Sept–23 November	Royal Drawing School : Autumn Term : St Mary's House, Norwich	45
21 Sept–1 January '25	Time & Tide Museum, Great Yarmouth : Sound Installation	50
25 Sept–26 October	Lay of the Land Contemporary & Country, King's Lynn	11
26 Sept–7 October	Sounding Place : Cromer Artspace on the Prom, Cromer, North Norfolk	20
27–29 September	King's Lynn Literature Festival : King's Lynn Town Hall	24
28 September	NNArt Circle : Bryony Knight workshop : Cringleford 2.30pm	32
OCTOBER 2024		page
In October	Ed Broner : Moosey Art Gallery, Norwich	29
Oct–February '25	Sainsbury Centre Sculpture Park, Norwich : Ivan Morison	47
1–13 October	4 Ways of Seeing : Anteros Arts Foundation, Norwich	23
4–6 October	Mannington Book Bash : Mannington Hall, North Norfolk	19
5 Oct–6 November	Bircham Gallery, Holt North Norfolk : Perlin   Jenkins	18
5 October	St. Ethedredas, Norwich : Joey LaMeche	49
11 Oct–14 December	GroundUp : GroundWork Gallery, King's Lynn, West Norfolk	25
11–31 October	Cromer Open 2024, Cromer Artspace on the Prom, Cromer	20
12–19 October	Bircham Gallery, Holt, North Norfolk : Angie Lewin	18
12 Oct–9 November	Society of Graphic Fine Art : Mandell's Gallery, Norwich	27
12 Oct–9 February '25	Time & Tide Museum, Great Yarmouth : Malorie Blackman	50
16 October	ncas talk : Richard Calvocoressi : Norwich School, 7pm	34
19 Oct–23 Feb '25	Norwich Castle : JMW Turner	36
26 October	NNArt Circle : Margaret Glass workshop : Cringleford, 3.30pm	32
NOVEMBER 2024		page
In November	Samual Weinburg : Moosey Art Gallery, Norwich	29
In November	Hannah Wilson : Moosey Art Gallery, Norwich	29
2 November	St. Ethedredas, Norwich : Richard Cleland	49
4–23 November	Undercroft Gallery, Norwich : Norwich & District Photographic Club	53

In the Norwich Lanes, Moosey Art in Labour In Vain Yard near the Guildhall specialises in work by illustrators and street artists, and their space is also available for hire – see pages 35/36.

Fairhurst Gallery has a retrospective exhibition of work by Brian Hagger. And if you want to have a go at making some ceramic work yourself, Fire & Flux is all you need – see page 24.

Norwich & Norfolk Art Circle and Norwich 20 Group both run life drawing workshops and exhibitions – see pages 39 and 46.

Norfolk Contemporary Art Society (ncas) has a programme of talks and visits covering a range of topics to stimulate knowledge and discussion. A new organisation, Norwich Lifelong Learning, has set up to run informal talks and courses in arts, history and cultural subjects – see page 33.

In King's Lynn the Fermoy Gallery has a summer exhibition, followed by 'Lay of the Land' by Contemporary & Country from 25 September to 26 October. GroundWork Gallery in Purfleet Street has GroundUp – an exhibition of work by artists in their recent residency, followed by Plant Power from March to June 2025.

A revived King's Lynn Literature Festival at the end of September also features well-known writers and poets for a three day event in the fantastic Town Hall – see page 24.

In the north, Artspace on the Prom in Cromer has series of exhibitions and is running workshops as part of a print event from 17 to 31 August (pg 20) Bircham Gallery is a well-established selling gallery on the High Street in Holt with high quality prints, original paintings, jewellery and crafts – see p17.

# Exhibitions at a glance : August '24 to March '25

Darker bands indicate shows which run across more than one month.

NOVEMBER 2024 continued		page
6 November	ncas talk : Martin Et Dunleavey : Norwich School, 7pm	34
7-10 November	Art Fair East 2024 : Assembly House Norwich	14
9 Nov-8 Jan '25	Bircham Gallery, Holt : Christmas Exhibitions	18
12-16 November	Creative Odyssey Postcard Exhibition : Mandell's Gallery, Norwich	27
23 Nov-28 December	Winter Show : Mandell's Gallery, Norwich	27
23 Nov-22 December	Primeyarc, Great Yarmouth : Martin Battye	42
23 Nov-27 April	Sainsbury Centre : Heroin Falls	47
23 Nov-27 April	Sainsbury Centre : Lindsey Mendick: Hot Mess	47
DECEMBER 2024		page
In December	Ivan Seriy : Moosey Art Gallery, Norwich	29
In December	Cheese Arnon : Moosey Art Gallery, Norwich	29
3-15 December	Festive Norwich Print Fair : Anteros Arts, Norwich	39
4 December	ncas talk : David Hughes : Norwich School, 7pm	34
5 December	St. Ethedredas, Norwich : Winter Warmer Group Show	49
JANUARY 2025		page
In January	Takeru Amano : Moosey Art Gallery, Norwich	29
25 January	NNArt Circle : Vanessa Whinney workshop : Cringleford, 2pm	32
FEBRUARY 2025		page
In February	Megan Hales : Moosey Art Gallery, Norwich	29
From February	The Bigger Picture Project 2025 : around Cromer, North Norfolk	20
3 February	NNArt Circle : Denise Allen workshop : Cringleford, 2pm	32
MARCH 2025		page
15 March-14 June	Plant Power : GroundWork Gallery, King's Lynn, West Norfolk	25

Updates and extra events will be posted on the website [www.artinnorwich.org.uk](http://www.artinnorwich.org.uk) where there is also a calendar that you can subscribe to or add to your Google, Outlook or Apple calendar so that you do not need to miss any events in the future.

The arts sector is going through and incredibly hard time and not all of our regular collaborators are able to be included in the print edition (though some are in the downloadable pdf edition). However, we are very appreciative of those that do contribute and endeavour to promote and support those that aren't able to.

And the second Mannington Hall Book Bash, curated by the Book Hive in Norwich, brings some top names in literature to our county – page 19.

Bayfield Sculpture Trail is becoming established as an annual 'sister' to the Raveningham Sculpture Trail, both organised by Sarah Cannell at Creative Odyssey, a CIC which furthers creative health and well-being for all – see page 16.

Four Cambridge based artists have an exhibition in Anteros Arts in Fye Bridge Street, Norwich called 4 Ways of Seeing, a newly formed group showing for the first time in Norwich.

Art East Anglia runs art courses and workshops with internationally recognised artists in a friendly and supportive setting.

The National Centre for Writing is based in Dragon Hall in Norwich and has recently opened the doors of this amazing medieval building year-round with activities and self-led tours – see page 30.

The Norfolk Contemporary Crafts Society is busy planning next year's exhibitions and details about them can be found on page 31.

Norwich Print Fair is still waiting to get back into St Margaret's Church but has a show from 3-15 December at Anteros Arts Foundation see page 39

Norwich University of the Arts is welcoming new applications for courses and has a number of Open Days – see page 41 for a QR code link.

The Royal Drawing School starts a new term on 21 September till 23 November – see page 45.

And the Poirier sculptures previously on Hay Hill, known as Homage to Sir Thomas Browne, now have a new home in Eaton Park see page 62.

## Membership organisations to join

A number of organisations have memberships to support the development and promotion of visual art in the county and to enable access to events. Here is a spotlight on some of them to encourage you to join and support them. The information is necessarily brief, you can read more about their priorities and activities on their websites.

### **EAST ANGLIA ART FUND** – see page 10

Cost £35 per year single, £55 joint membership

Benefits: Private views, discounts, free admission to Norwich Castle, special events and visits, a newsletter to keep you up to speed.

Supports: Working with Norwich Castle on exhibitions, purchases of important artworks, artist projects and exhibitions, grants, education, scholarships and a small team to organise all of this.

See <https://www.eastangliaartfund.org.uk> for more info



Great Art for Our Region

### **NORFOLK CONTEMPORARY ART SOCIETY– ncas** – see page 34/35

Cost £20 per year single, £30 joint membership. Free for students

Benefits: Free admission and discount at Norwich Castle, special events, and visits, talks, member meetings.

Supports: Regular exhibitions, championing contemporary art and artists in the region, helping Norwich Castle to purchase contemporary works for the county.

See <https://www.n-cas.org.uk> for more info



### **NORFOLK & NORWICH ART CIRCLE – NNAC** – see page 32

Cost £25 per year per person

Benefits: Inclusive opportunity to exhibit, free admission to talks and demos, activities for artists of any genre

Supports : Development of professional and amateur artists in Norfolk.

See <https://www.nnartcircle.com> for more info



This edition also includes 'spotlight' pages – spare pages which, as editor, I have chosen to use as editorial to profile some of the curators and organisers of art and cultural activities in Norwich and Norfolk.

Future editions will include more as there are many people working behind the scenes who deserve recognition but are rarely seen.

From the last edition, the Ravingingham Sculpture Trail continues and the Roger Ackling retrospective exhibition 'Sunlight' is also ongoing at Norwich Castle both running until September.

To take you around the county, we have included summaries of arts and culture on offer in Cromer, Great Yarmouth and King's Lynn as these towns are very much part of the growing Norfolk arts scene.

There is extra information about these places on the Art in Norwich website [www.artinnorwich.org.uk](http://www.artinnorwich.org.uk)

To help find your way around the booklet, Norfolk events are signified by a green side tab, grey for Norwich events.

### **SmARTify App to discover art**

A recent visit to the Sainsbury Centre introduced me to the SmARTify App – a different way to engage with art. The app is really useful to discover new work, artists and exhibitions and also to listen to a deeper interpretation. The Sainsbury Centre currently has two tours on the app which you can use at home or in the Centre to guide you round. Find out more on page 8

**Art in Norwich by post:** You can order copies to be sent to you for the price of the postage – see page 9 or [www.artinnorwich.org.uk](http://www.artinnorwich.org.uk) for details and please get copies for your friends and neighbours when you can.

## INDEX OF PAGES

At a Glance calendar.....	2-5	originalprojects; and PrimeYarc.....	42
About Art in Norwich.....	7	OUTPOST.....	43
About SmARTify.....	8	Royal Drawing School.....	44/45
Art in Norwich by post.....	9	Sainsbury Centre.....	46/47/48
Join East Anglian Art Fund.....	10	St Etheldreda's Artist Studios.....	49
Contemporary & Country.....	11	Time & Tide, Great Yarmouth.....	50
Artist Gennadiy Ivanov.....	12	Arts & Culture in Great Yarmouth.....	51/52
Art East Anglia.....	13	Undercroft Gallery.....	53
Art Fair East.....	14	Arts Roundup.....	54
Autumn Festival of Norfolk.....	15	Quick guide to Art in Norwich.....	55
Bayfield Sculpture Trail.....	16	Map of Norwich venues.....	56
Spotlight on Sarah Cannell.....	17	Art in Norwich members.....	57
Bircham Gallery, Holt.....	18	Map of Norfolk venues.....	58
Mannington Book Bash.....	19	Contact details and venues in Norfolk.....	59
Cromer Art Space.....	20	Partner logos.....	60
Fire & Flux Ceramics.....	21	Heritage Open Days.....	61
Fairhurst Gallery/Brian Hagger.....	22	Thomas Browne at Eaton Park.....	62
Four Ways of Seeing.....	23	Antony Gormley at Houghton Hall.....	63
King's Lynn Literature Festival.....	24	Back cover.....	64
GroundWork Gallery, King's Lynn.....	25	Extra pages in pdf version not printed.	
Arts in King's Lynn and West Norfolk.....	26	If we have not been able to include partners in the print edition, there is a pdf version with more pages and is downloadable from the Art in Norwich website. Please feel free to distribute both print and pdf!	
Mandell's Gallery.....	27		
Moosey Art Norwich.....	28/29		
National Centre for Writing, Norwich.....	30		
Norfolk Contemporary Craft Society (NCCS).....	31		
Norfolk & Norwich Art Circle.....	32		
Norwich Lifelong Learning.....	33		
Norfolk Contemporary Art Society.....	34/35		
Norwich Castle Museum and Art Gallery.....	36/37		
Norwich 20 Group.....	38		
Norwich Print Fair.....	39		
The Oak Circus Centre.....	40		
Norwich University of the Arts.....	41		



Gainsborough's House in Sudbury, Suffolk. A museum, gallery and garden dedicated to Sudbury-born painter Thomas Gainsborough  
[www.gainsborough.org](http://www.gainsborough.org)



Art in Norwich/Norfolk is produced by Culture Shift Norwich as a companion to Music in Norwich/Norfolk, a roundup of concerts and music events in Norwich and beyond which you can download on [www.musicinnorwich.org.uk](http://www.musicinnorwich.org.uk) or pick up a printed copy around the city. The next edition of MiN is due September 2024. Information about Culture Shift can be found at [www.theshiftnorwich.org.uk](http://www.theshiftnorwich.org.uk) where you can also find an overview of Norwich culture and other useful information. You can sign up for email updates via Culture Shift on the website.

Errors and omissions excepted. Info is checked as well as possible but is subject to mistakes and change and cannot be guaranteed. Please check before travelling.

If you require copies to display or are interested in being included in the next edition of either publication, please email [info@theshiftnorwich.org.uk](mailto:info@theshiftnorwich.org.uk)

## About Art in Norwich

This programme is a collaboration of a number of organisations who promote visual art, public art, craft, heritage and literature in and around Norwich.

The reach extends into the wider county of Norfolk, highlighting the thriving arts and cultural scene.

The aim is to gather visual art listings in one place so that they are easy to find and to offer an overview of art activity and infrastructure in city and county throughout the year. There is an emphasis on visual

art but wider cultural events are also included where appropriate. Behind Art in Norwich is a self-supporting partnership of art groups and cultural organisations.

We hope you will keep this booklet safe as it covers six months' programming. Because of space limitations and lots going on, exhibition and event details are brief but you can find out more from individual organisations and venues from their own websites.

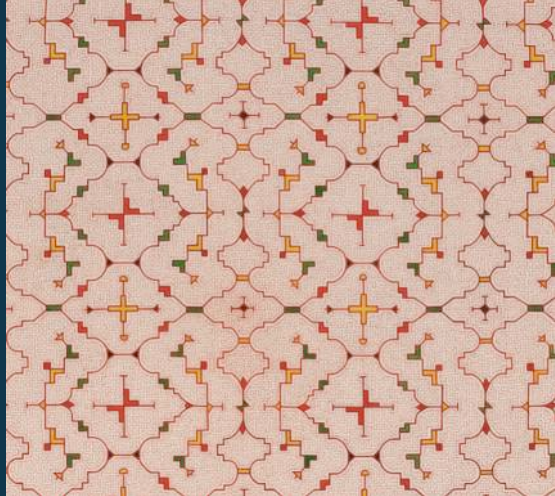
See pages at the back of the booklet for maps, contact and venue details.

Please also visit our website at [www.artinnorwich.org.uk](http://www.artinnorwich.org.uk) where you can download a pdf of this booklet.

Important: All information is subject to change – please check with individual organisations before travelling to an event.

*Image: Sara Flores, Untitled (Maya Kené 15, 2023), 2023, Vegetal dyes on wild-cotton canvas 51 5/8 x 90 11/16 inches. (131.1 x 230.3cm) © the artist. Photo © White Cube (OllieHammick)*

*NB Sara Flores does not consider ayahuasca to be a drug, but rather a sacred plant medicine.*



**SAINSBURY  
CENTRE**  
Living Art Sharing Stories

## Big Question : Why Do We Take Drugs?

The Sainsbury Centre's third season of its 'Big Questions' series asks Why Do We Take Drugs? through a programme of interlinked exhibitions.

14 September 2024 – 27 April 2025

[www.sainsburycentre.ac.uk](http://www.sainsburycentre.ac.uk)

## About the Smartify app

### Carry a tour guide in your pocket!

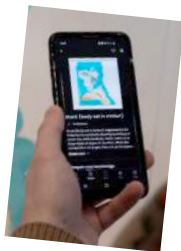
Smartify is a free app which is available for smartphones and tablets to enable people to connect digitally with arts and culture.

The idea of the app is that you can find out more about objects and artworks in a gallery or museum collection without cluttering the setting of the object with large interpretation panels. You can access lots of extra content and information about exhibitions, take tours, listen to talks and experience a deeper engagement through the app, either in the venue or remotely from your sofa before, after or instead of your visit.

You can search artists or galleries or specific pieces of work. The app also prompts you to discover new artefacts and exhibitions which you may not know of otherwise. Smartify also connects museums and art galleries both nationally and internationally enabling audiences to 'visit' venues that they wouldn't normally be able to get to such as the Museum of London, the National Gallery and Portrait Gallery, the Ashmolean in Oxford, the V&A in Dundee, the Smithsonian Institute in the US and many more.

In Norfolk we are lucky enough to have the Sainsbury Centre at UEA as a partner venue so you can tour the exhibits and take a close look at special objects such as Henry Moore's *Mother and Child* either at home or in the beautiful Norman Foster building in the UEA campus.

SMARTIFY



SCAN

## Smartify at the Sainsbury Centre

Through two immersive audio experiences on the Smartify app, you can discover new ways to meet the living art in our collection.

*Living Art*, a tour guided by museum director Jago Cooper, invites you to meet art in new and explorative ways, unlike how you have experienced it in a museum before. You will be asked to touch the artwork, listen to it, move with it, and forge a personal relationship with it that can transcend time and artists' intent.

*Sharing Stories* enables you to choose the voice of the artwork you want to listen to. With more than thirty contributors from all around the world, choose between artist, expert or lived experience.

You can also use the Smartify app to scan our objects if you want to find out more about anything in our collection. Ask at the reception desk for more information about how the app works and what you can find through it as well as other ways of navigating the galleries.

Download the free Smartify app for either iPhone or Android phones and click 'Explore' to search for 'Sainsbury Centre'. Scan the QR code for a shortcut to the app.

[www.smartify.org](http://www.smartify.org)

## Art and Culture in Norwich & Norfolk, Covid and the economic downturn

Clearly everyone has been affected by Covid over recent years, and now there are all the challenges of the economic downturn, with money for exhibitions and venues in short supply. Many groups are finding it hard to plan ahead in the way they are used to doing. The routine of publishing Art and Culture in Norwich & Norfolk is back to its regular spring/autumn schedule and widely available at many venues and from the Arts Roundup racks in The Forum, City College, Norwich Bus station and many other venues around the city and some in the county too and even into Suffolk! St Peter Mancroft and Norwich Cathedral in Norwich also have reliable supplies.

In true creative spirit, organisations and artists are powering through the challenges and making new events happen. The continuing demand for Art in Norwich and Norfolk has been truly heart-warming. Inevitably there is still some uncertainty in programming so please use this booklet as a directory and check with venues and organisations by visiting their websites and social media.

But don't let it stop you going out, venues and organisers need your support.

You can find web addresses on every page and a directory at the back of the booklet.




# ART IN NORWICH & NORFOLK BY POST

We have all had to adapt to many changes to the way we live and work – some venues have closed and with fuel and other price rises we are just going out less – so to make sure we don't miss some of the great arts and cultural opportunities available to us, making active choices is more important.

To make that easier, Art and Music in Norwich/Norfolk booklets are now available by post – pay the postage and get your very own copy delivered to your door.

Go to [www.artinnorwich.org.uk/AiNbypost](http://www.artinnorwich.org.uk/AiNbypost) or email [info@theshiftnorwich.org.uk](mailto:info@theshiftnorwich.org.uk) find out what to do to get your copy for the price of a stamp.



**The East Anglia Art Fund (EAAF) is an arts charity dedicated to enriching cultural life, supporting excellence in exhibitions and art education in our region.**

**Membership Benefits include:**

**Free admission to Norwich Castle plus an accompanying child, exclusive invitations to Exhibition Opening events at Norwich Castle and the opportunity to take part in a range of bespoke tours, talks, study days and studio visits.**

**Our members are making sure that great art happens, right here where they live.**

Kate Giles, *In the Valley of the Nar (Study) I*. Oil on Board, 16x20cm. Courtesy the Artist.

**EAST  
ANGLIA  
ART  
FUND**

Great Art for Our Region

**Join**

**Become an EAAF member.**

**Visit: [www.eastangliaartfund.org.uk](http://www.eastangliaartfund.org.uk)**

**Telephone: 01603 493668**

CONTEMPORARY  
ANDCOUNTRY

# Lay of the Land

EAST ANGLIAN LANDSCAPE NOW

25 SEPT – 26 OCT, 2024

FERMOY GALLERY & SHAKESPEARE BARN  
29 KING ST, KING'S LYNN, PE30 1HA

30+ EAST ANGLIAN ARTISTS & MAKERS

CONTEMPORARYANDCOUNTRY.COM

© Linda Jamieson

Funded by:



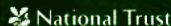
Partners:



Supported by:



In collaboration with:



## Gennadiy Ivanov : artist and activist



To find out more about Gennadiy and his work, and to discuss a sale or commission, or to find out more about the climate change project *Transitions and the mural* please scan the QR code or email [info@studioart.org.uk](mailto:info@studioart.org.uk)



Artist and curator Gennadiy Ivanov works prolifically, painting portraits and landscapes in equal measure. With an individual and expressive style, he works boldly and rapidly. His works are for sale from his studio in Upper St Giles Street, Norwich and he is available for commissions. Recently, Gennadiy has been absorbed in a major environmental project with Trevor Davies, former Pro Vice Chancellor for Research and Director of the Climatic Research Unit at UEA and Professor John Pomeroy at Saskatchewan University.

In 2023 Gennadiy painted a mural entitled *Climate Mural For Our Times*, a 10m x 1.5m set of canvasses, for the Council Chamber at City Hall, commissioned for the 50th anniversary year of the UEA's Climatic Research Unit.



Art East Anglia



Art Courses and Workshops with internationally recognised artists in a friendly and supportive setting. Based in Hindolveston Norfolk

[info@arteanglia.com](mailto:info@arteanglia.com) [www.arteanglia.com](http://www.arteanglia.com)

# Art Fair East 2024



Art Fair East aims to showcase national and international artists, galleries and dealers to an Eastern Region audience of art lovers and collectors. The 2024 fair will take place in the spectacular setting of the Assembly House, at the heart of Norwich city centre, one of the largest exhibitions of its kind outside London, with hundreds of artworks by international and regional talent.

A wealth of artists, dealers and experts will be on hand to help visitors to build a superb collection of visual art from the UK and overseas. From affordable prints by recognised artists and new talent through to serious investments, gallery specialists will be available to advise on collecting contemporary art including original paintings, prints, sculpture, photography and artworks made to commission.

Thursday 7 to Sunday 10 November 2024  
The Assembly House, Theatre Street,  
Norwich NR2 1RQ

## ART FAIR EAST 2024

### Opening times

Thursday 7 November 6pm to 9pm

VIP Private View

Friday 8 November 10.30am to 5.30pm

FAIR OPEN TO PUBLIC

Saturday 9 November 10.30am to 6pm

FAIR OPEN TO PUBLIC

Sunday 10 November 10.30am to 5pm

FAIR OPEN TO PUBLIC

Tickets £5, £3.50 concessions, under 16s free



**"The foremost place to see and buy top quality contemporary art in the east of England."**

Eastern Daily Press



Brian Korteling



Will Teather

Stash Kirkbride & Peter Barrow present a PBSK Partnership project

**UEA**  
University of East Anglia

# The **AUTUMN FESTIVAL** of Norfolk

IN PARTNERSHIP WITH UEA

THEATRE • MUSIC • VOICE • DANCE • VISUAL ARTS • SPOKEN WORD • NEW COMMISSIONS

**14TH SEPTEMBER  
TO 29TH NOVEMBER  
2024**

**pbsk**  
PARTNERSHIP  
Creating Projects in Norfolk

**BOX OFFICE**

At: **N** Norwich  
Theatre

Call 01603 598 676 or visit  
[www.autumnfestivalofnorfolk.org](http://www.autumnfestivalofnorfolk.org)



[www.autumnfestivalofnorfolk.org](http://www.autumnfestivalofnorfolk.org)



Image by THE NORWICH DANDIES

**NORWICH  
CATHEDRAL**

  
NORWICH SCHOOL

  
BOOJA-BOOJA

**cg** / Canaccord  
Genuity  
Wealth Management

 CITY  
COLLEGE  
NORWICH

**MEDIA PARTNERS**  
**Eastern Daily Press**  
**RADIO Norfolk**

**Norfolk**

# Bayfield Hall Sculpture Trail 2024



The third Bayfield Hall Sculpture Trail features 45 artists, sculptors, musicians and makers in the beautiful gardens and grounds of Bayfield Hall near Holt. The trail is curated by Sarah Cannell with kind permission to use the private gardens and chapel by Caroline and Roger Combe.

An uplifting, inspiring natural space for people to experience contemporary art in a beautiful rural setting in North Norfolk.

**Bayfield Hall, Letheringsett with Glandford, North Norfolk, NR25 7JN, 3 miles west of Holt**

*Creative Odyssey CIC Projects – Arts project in nature to inspire and soothe the soul.*

Wednesday 18 September to  
Sunday 20 October 2024  
Open Wednesday–Sunday  
10am–5pm

## BAYFIELD HALL SCULPTURE TRAIL

Visitors to the site will be able to walk through 3 acres of grounds, woodland and wild gardens to view the work of over 40 artists from across the UK.

The circular trail ends in the fabulous Old Stables Decorative Antiques and Interiors shops with a pop up gallery featuring works by artists from the trail. Some works on the trail are available for sale or artists can be commissioned.

Visitors can also visit the Natural Surroundings Wildflower Cafe with its beautiful plant nursery.



Grace Adam



Tickets £8 adults, under 18s free. Book online at [www.bayfieldhallsculpture.com](http://www.bayfieldhallsculpture.com)

Bayfield Sculpture Trail is curated and produced by the team that annually creates the Raveningham Sculpture Trail at Raveningham, near Loddon, south Norfolk.

Insta: [@bayfieldhallsculpture](https://www.instagram.com/bayfieldhallsculpture)

## Spotlight on...



*Sarah Cannell,  
artist, curator,  
ceramicist and  
tutor*

### **SARAH CANNELL**

Sarah Cannell is an East Anglian based artist, curator, tutor who exhibits widely, curates the Raveningham and Bayfield Sculpture Trails and has work in collections around the UK. She balances her time between making her own work, curating exhibitions and running workshops. Sarah studied Visual Culture at Falmouth Art School, an MA in Gallery Studies at Essex University and has topped up her creative practice over the years with painting and printmaking courses at Central St Martins, Curwen Print Study Centre and most recently Coombe Farm Studios in Devon. Sarah's art practice starts with drawing inspired by the marshy landscapes of Norfolk/ Suffolk where she grew up. Her landscapes are accompanied by bold colour. Her work can be seen at Cecilia Colman Gallery (London), Primavera Gallery (Cambridge), V K Gallery (St Ives), The Post Room (Norwich).



*Exhibition at Mandell's Gallery*



*Raveningham Sculpture Trail*

Sarah is just over half way through her ambitious '1000 Vessel Project' which has been developing over the past 3 years. The project started as a form of calm meditative practice through making and to date Sarah has created 527 vessels.

In 2021 she became Director of Creative Odyssey CIC which develops creative projects in nature to inspire and soothe the soul. These annually include Raveningham Sculpture Trail, Bayfield Hall Sculpture Trail and numerous arts workshops for community groups, schools, universities and young asylum seekers. The CIC also gives small grants to artists and access to the Raveningham Community Pottery. Alongside Sarah's artistic career she is committed to fundraising for Children with Cancer (CWC) UK. So far she has raised £15k through two Odyssey Postcard exhibitions hosted by Mandell's Gallery in Norwich and donations from the sculpture trails. A third fundraising exhibition will be held at Mandell's Gallery this year in November 2024 – postcard sized artworks will be sold anonymously at £40 each. For more information go to [www.raveninghamsculpturetrail.com/odyssey-postcards](http://www.raveninghamsculpturetrail.com/odyssey-postcards)

# Bircham Gallery, Holt



The Gallery, Holt



Sarah Jenkins

Light and spacious gallery situated on the Market Place in the Georgian town of Holt in north Norfolk.

The gallery stocks the work of over 200 artists and craftspeople, displaying a superb collection of unique and beautiful art from East Anglia and beyond.

Our innovative exhibition programme includes the work of established contemporary artists, acclaimed modern masters and emerging new talent.

14 Market Place, Holt, Norfolk NR25 6BW

Admission free, open 9am-5pm Monday-Saturday

10am-4pm Bank Holidays

Tel: 01263 713312 Email: [info@birchamgallery.co.uk](mailto:info@birchamgallery.co.uk)

## Exhibitions 2024



Ross Loveday



Anna Perlin

**Monday 29 July to Wednesday 4 September 2024**

### SUMMER SHOW

Annual show of work from gallery artists for the summer.

**Saturday 7 September to Wednesday 2 October 2024**

### LIMINAL GESTURES

Paintings & prints by Ross Loveday, Chris Harrison and Mari French with ceramics by Barbara Gittings.

**Saturday 5 October to Wednesday 6 November 2024**

### PERLIN | JENKINS

Mixed media paintings by Anna Perlin with hand-built stoneware ceramics by Sarah Jenkins.

**Saturday 12 October to Saturday 19 October 2024**

### ANGIE LEWIN BOOK SIGNING

Week-long show featuring a selection of new prints. Angie will be signing copies of her latest book in the gallery on Saturday 12 October.

**Saturday 9 November to Wednesday 8 January 2025**

### CHRISTMAS EXHIBITIONS

Two collections of work for Christmas from gallery artists.

PATRICK  
BARKHAM



TESSA  
MCWATT

ANNIE  
GRAY

KATHRYN  
FAULKE

MANNINGTON  
Book Bash!

HOLLIE  
MCNISH

A LITERARY FESTIVAL

4<sup>TH</sup> - 6<sup>TH</sup> OCTOBER 2024

HELEN  
FRY

DAVID  
NICHOLLS

THE BOOK BASH IS BACK FOR 2024!  
JOIN US FOR ANOTHER WEEKEND OF  
ROLLICKING EVENTS WITH OLD FRIENDS,  
LOCAL HEROES AND WORLD-CLASS WRITERS.

NED  
PALMER

ALL SERVED WITH TOP-NOTCH FOOD IN THE  
STUNNING GARDENS OF MEDIEVAL  
MANNINGTON HALL.

CHRIS  
RIDDELL

ROBERT  
MACFARLANE

CURATED BY AWARD-WINNING BOOKSHOP  
THE BOOK HIVE.

HARRIET  
WALTER

[www.manningtonbookbash.co.uk](http://www.manningtonbookbash.co.uk)

MARCHELLE  
FARRELL

01603 219268

SAM  
LEITH



Cromer Artspace aims to engage and inspire residents and visitors with art in public spaces, bringing new work to Cromer and promoting the arts and creativity. We continue to develop the *The Bigger Picture* project. Photographs chosen by community groups from the museum's collection will be displayed on walls around the town until September 2024. From February 2025 there will be a new selection - see on the right. Through the summer, Cromer Artspace runs *Artspace on the Prom* with varied and exciting, free, exhibitions open daily 11am to 4pm. [To keep up to date with Artspace projects, for booking and a full programme of events visit cromer-artspace.uk](http://www.cromer-artspace.uk)

Saturday 17 to Saturday 31 August 2024

## PRINT CROMER 24 'IN THE MOMENT'

Original prints at Artspace on the Prom and around the town. This celebration of print includes several workshops and events - please see the Cromer Artspace website for details.

Wednesday 4 to Sunday 15 September 2024

## THIN PLACES : JEN FOX AND PAEONY LEWIS

Two artists respond to the concept of low tide as a place where the boundary thins between worlds.

Artist talks Saturday 7 and Friday 13 September at 4pm

Wednesday 18 to Monday 23 September 2024

## SHOWCASING VOLUNTEERS

Thursday 26 September to Monday 7 October 2024

## SOUNDING PLACE : CLAIRE OXLEY AND DEBBIE LYDDON

Listening to the resonances of the North Norfolk landscape  
Artists' conversation Monday 30 September at 4.30pm

Friday 11 to Thursday 31 October 2024

## CROMER OPEN 24

Artists in conversation Saturday 19 October, 4.30pm led by Marion Piper.



## THE BIGGER PICTURE PROJECT 2025

From February 2025 a new outdoor exhibition will go up on walls around Cromer, showing full size reproductions of selected artworks from the National Galleries of Scotland.



### The Gallery

Fire and Flux is an independent ceramics gallery established in 2016 specialising in modern and contemporary studio ceramics, working exclusively with British-based artists. The gallery occupies the ground floor of a lovely Grade II listed building.

### The Pottery Studios are on the First Floor

We have fully equipped pottery studios with work stations available to rent on a daily or half daily basis, for potters who are able to work independently. Studios are booked on a rolling 4-weekly basis.

### Pottery Lessons

We offer pottery tuition for beginners as well as advanced tuition on most aspects of ceramics. Evening classes are also regularly available.



## Fairhurst Gallery Norwich



Above: Artist Brian Hagger

Left: Fairhurst Gallery

Artist Brian Hagger is renowned for his paintings of urban London in the 1960s and early 70s, mostly focusing on Fulham and Chelsea. He exhibited at the Royal Academy Summer Exhibitions and had solo exhibitions at Bramante Gallery, Thackeray Gallery, with his last at Langton Gallery. He also took part in mixed exhibitions at the Phoenix Gallery, Lavenham and with the Norwich Twenty Group and Norfolk Contemporary Arts Society towards the latter part of his life.

Leaving London, he moved to Brighton where he continued painting urban scenes, then to Great Yarmouth before settling in Norwich in 1986 till his death in 2006.

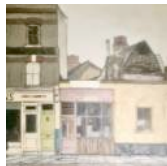
## BRIAN HAGGER RETROSPECTIVE EXHIBITION

The 'Redcliffe' exhibition brings together a number of paintings and drawings from throughout his career including his final Norwich sketches.

Monday 16 to Saturday 21 September 2024

Fairhurst Gallery, 17 Bedford Street, Norwich NR2 1AR

Private view on 16 September, 6pm-8pm



A number of Brian's drawings will be for sale during the exhibition along with some prints of his paintings. Please visit the gallery website for more information.

Exhibition opening times Tuesday-Saturday, 9.30-5pm

## Four Ways of Seeing : Group Show



Deanna Tyson



Judy Logan

FOUR WAYS OF SEEING is a group of professional Cambridge-based artists – Sue Law, Judy Logan, Jill Ogilvy and Deanna Tyson – celebrating the uniqueness of artistic expression. United by their belief in individuality over trends, they formed the group to showcase their work and collaborate on shared themes. Whilst they have a history of exhibiting together in London, Norwich, and Cambridge, this is their first exhibition in Norwich as a group. Each artist works in a range of chosen media including painting, sculpture, textiles, and print. They will be showing their work at Anteros Gallery. Their previews offer a unique experience where the artists discuss their inspirations, inviting informal conversations about the art.

at Anteros Arts Foundation Gallery  
Tuesday 1 to Sunday 13 October 2024



Sue Law



Jill Ogilvy

Tuesday 1 to Sunday 13 October 2024  
Anteros Arts Foundation Gallery  
11-15 Fye Bridge Street, Norwich NR13 1LJ

### 4 WAYS OF SEEING

Sue Law [www.suelawart.com](http://www.suelawart.com)

Judy Logan [www.judylogan.co.uk](http://www.judylogan.co.uk)

Jill Ogilvy [www.jillogilvy.co.uk](http://www.jillogilvy.co.uk)

Deanna Tyson [www.deannatyson.co.uk](http://www.deannatyson.co.uk)

Gallery open: Monday to Saturday 10am-5pm

Sunday: 10am-4pm

PV: Thursday 3 October 6-8pm

Artists introductions 7pm

Meet the Artists Sunday 13 October, 1-3pm



# King's Lynn Literature Festival 2024



15<sup>th</sup> century King's Lynn Town Hall, Saturday Market Place

In 1985, the annual King's Lynn Poetry Festival was born, soon to be followed by a Book Festival each year in the spring. The shared visions of poet George Macbeth and solicitor Tony Ellis came together to unite people through the power of words. In a time when poetry and book festivals were rare, the festivals were a welcome and much needed addition to the creative community.

With a new chair this year, the impressive Sherie Naidoo who has considerable experience in the arts world, and bringing both festivals together, this 'small festival with a big heart' has attracted some best-selling authors, award-winning poets, literary critics and commentators.

The King's Lynn Literature Festival returns to the striking King's Lynn Town Hall over the weekend of 27/28/29 September.



D J Taylor



Camilla Balshaw



There are six events across three days and distinguished guest writers and poets include:

*Simon Lewis, Vernon Bogdanor, D.J.Taylor, Chris Bigsby, Sarah May, Louise Doughty, Rachel Hore, Bridget Walsh, Camilla Balshaw, Kate Macdonald, Lisa St Aubin de Teran, Susan Grossey, Jill Dawson, and poets John Greening, Wendy Cope, Rory Waterman, and Ramona Herdman.*

Tickets covering all six sessions cost £51 and individual events are £15 each. There will also be an option to book in advance and enjoy 'Lunch with the Writers' on both Saturday and Sunday. Please see the website for details

Tickets are available from the King's Lynn Corn Exchange by phoning the box office on 01553 764864 or via their website under the Town Hall listings <https://www.kingslynncornexchange.co.uk>

# Ground Up

Works by all the artists in our summer residency  
11 October-14 December 2024

# Plant Power

Plants take centre stage in an era of climate change  
15 March-14 June 2025

Wednesday-Saturday 11.00-4.00 during exhibition dates

**GroundWork** Gallery+Shop

17 Purfleet Street, King's Lynn, Norfolk PE30 1ER

Look online for events and updates...

[www.groundworkgallery.com](http://www.groundworkgallery.com)

The gallery for art+environment



# GroundWork

## Art in King's Lynn & West Norfolk



GroundWork Gallery



*Projections by  
Collusion on  
the Customs  
House, now  
the home of  
Greyfriars Art  
Space*



*St George's Guildhall, King Street*

Arts and culture has been established in King's Lynn since the 1950s. In 2021, the King's Lynn Festival celebrated 70 years of an annual programme of music, theatre and art in the town which takes place each July. As well as traditional favourites such as Festival Too, the returning annual literature festival in September (page 24), the Shakespeare and Hansa Festivals and the Mart, there have been more recent cultural developments in the town. GroundWork Gallery in Purfleet (page 25) specialises in art which addresses environmental issues and includes exhibitions, talks and workshops and a meeting place for creative people. West Norfolk Artists' Association has over 70 members of active artists exhibiting regularly in various venues including St Nicholas' Chapel and the Fermoy Gallery in the Guildhall complex.

Greyfriars Art Space has moved into the Customs House opposite GroundWork Gallery in Purfleet.

Arts and tech company Collusion are based in the White Barn, part of the Guildhall complex and run projects to develop visual and interactive content, supporting artists in creative technologies.

St George's Guildhall in King Street has received Towns Deal funding to enable a complete overhaul and renovation of this historic arts space and theatre, one of the oldest in the country and where William Shakespeare himself is said to have performed. It will be an arts complex, performance space and creative hub including the Fermoy Gallery and Shakespeare Barn where Contemporary & Country have a new show of high quality art and crafts, *Lay of the Land*, from 25 September to 26 October - see page 11.

## Mandell's Gallery



Mandell's Gallery is one of Norwich and Norfolk's most respected commercial art galleries. Mandell's Gallery was founded in 1965. Originally specialising in 19th century Norwich School painters, the gallery has expanded greatly and now has a diverse collection of traditional and contemporary art, offering opportunities for many new and local artists as well as more established names. You are welcome to view the collection at the art gallery, situated on the beautiful and historic street of Elm Hill, near Norwich Cathedral.

The gallery is open Tuesday–Saturday 10am–5pm  
Monday - by appointment  
[www.mandellsgallery.co.uk](http://www.mandellsgallery.co.uk) Tel: 01603 626892

## Exhibitions

Mandell's Gallery, Elm Hill,  
Norwich NR3 1HN

**Saturday 10 to  
Saturday 31 August 2024**  
**GRACE ADAM : FLINT**

Flint will explore the geometries of flint. 100 ceramic creations; from tiny naturalistic objects to outside, pared down Cubist sculptures, alongside prints and collage pieces.

**Saturday 7 September to Saturday 5 October 2024**  
**ICHI-GO ICHI-E : MIEKO SAGISAKA & PAT SOUTHWOOD**

*One time, one chance* – A unique exhibition of Japanese and UK Ceramics, exploring and combining traditional and contemporary techniques from both cultures.

**Saturday 12 October to Saturday 9 November 2024**  
**THE SOCIETY OF GRAPHIC FINE ART**

An exhibition of works by Members of The Society of Graphic Fine Art.

**Tuesday 12 to Saturday 16 November 2024**  
**CREATIVE ODYSSEY POSTCARD FUNDRAISER**

Exhibition of original tiny artworks to raise funds for Children with Cancer UK & Creative Odyssey – Arts projects in nature to inspire and soothe the soul.

**Saturday 23 November to Saturday 28 December 2024**  
**WINTER SHOW**

A winter show of a diverse exhibition of traditional and contemporary art.



Grace Adam







National Centre for Writing at Dragon Hall © Luke Witcomb

The Literature House, Dragon Hall, is the physical home of National Centre for Writing and the centrepiece of Norwich UNESCO City of Literature: a place of storytelling and story making dedicated to the development of writing, new and emerging writers, and literary translators. Whether you're a writer, reader, translator, neighbour, or curious visitor, we'd love for you to get involved with our year-round programme of events and opportunities. As a charity our work also extends into communities with children, families, refugees and asylum seekers, and older people, encouraging them to use writing and creative ideas to tell their stories.

Instagram @writerscentre

National Centre for Writing, Dragon Hall, 115-123 King Street, Norwich NR1 1QE. Tel: 01603 877177

## Step into Dragon Hall and discover centuries of stories

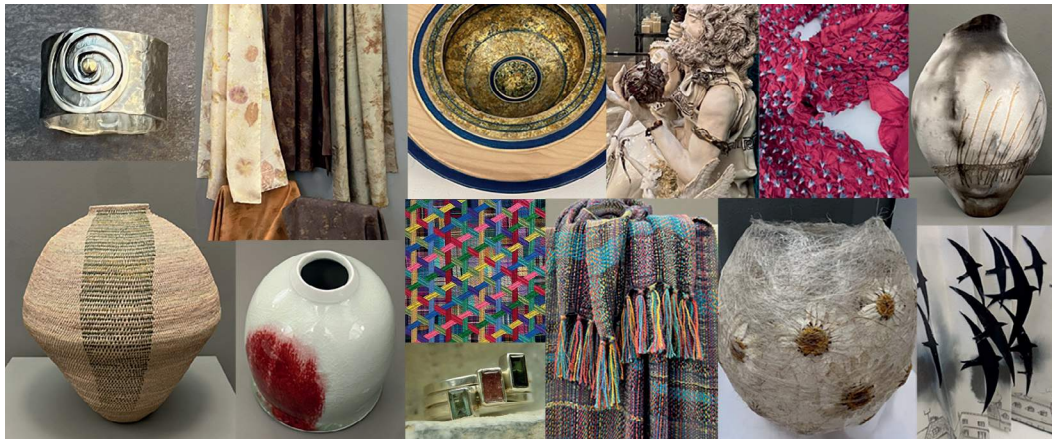
The National Centre for Writing has its home in the beautiful medieval merchant's trading place, Dragon Hall, on King Street. The Great Hall – the jewel in the crown of this amazing building – was built in 1427 by trader Robert Toppes. Parts of the site date back even further, suggesting Anglo-Saxon dwellings. Since then, it has been through many changes.



Dragon Hall is open to the public several days a week. Learn about the history of the site through self-led tours, identify fascinating features that have developed over centuries of use, and meet the Great Hall's last remaining dragon. There is also a courtyard garden, with a nature trail for children and another for adults, and plenty of creative activities for families.

Drop-in visitor hours are 10am to 3pm on Sunday to Wednesday each week. Admission is free. The public entrance is on King Street, opposite the The Butterfly Café.





# NORFOLK CONTEMPORARY CRAFT SOCIETY

Formed in 1972 by local craftspeople, the Society continues in its original intentions to promote the work of the finest designer makers in the county. Members range from those at the peak of a lifelong career to emerging and talented newcomers. If you are interested in becoming a member, please make initial contact with us through the website. Exhibition details can also be found on our website.

**The NCCS EMERGING MAKER AWARD 2025 is now open for applications.**  
Enquire via our website: [www.norfolkcontemporarycraft.co.uk](http://www.norfolkcontemporarycraft.co.uk)



# Norfolk & Norwich Art Circle



Sue Willmer, *Awakening*



Corinne Tulk, *Cascade*

Founded in 1885, the Norfolk and Norwich Art Circle is actively engaged in promoting the artistic talents of the region. Members of NNAC have interests in diverse forms of art and in many mediums including sculpture, 3D work and digital painting. NNAC organises and promotes at least two major exhibitions a year. It also offers members and visitors, a monthly programme of events including demonstrations and talks, free to members life-drawing and Art Chat evenings. If you draw, paint, sculpt, or are interested in art NNAC would welcome you to join us.

Membership is £25 per annum. Membership benefits include a monthly newsletter, monthly demonstrations or talks, publicity for members' exhibitions, excursions and workshops. Members may also submit artwork for selection for exhibition.

**Instagram:** #thenorfolkandnorwichartcircle – **Facebook:** Norfolk & Norwich Art Circle

## Exhibitions 2024

**Wednesday 6–26 November 2024 :** Handa Gallery, Wells Maltings, Wells-next-the-Sea, North Norfolk  
Lecture on life and work of Sir Alfred Munnings PPRA by Jenny Hand, Director, Munnings Museum of Art.  
Free for all. Please contact Wells Maltings to book tickets.  
Tel: 01328 710885 [www.wellsmaltings.org.uk](http://www.wellsmaltings.org.uk)

## Workshops and Demonstrations 2024/25

**At The Willow Centre, Cringleford, Norwich, NR4 7JJ**  
**Saturday 28 September 2025, 2.30pm**  
**BRYONY KNIGHT** Oil demonstration

**Saturday 26 October 2024, 3.30pm**  
**MARGARET GLASS** Pastel Land/seascape

**Saturday 25 January 2025, 2pm** **VANESSA WHINNEY**  
Illustrated talk on James Fletcher Watson

**Saturday 22 February 2025, 2pm** **DENISE ALLEN**  
Loose Landscape in acrylics

**Art Chat meetings :** monthly on alternate Tuesdays and Thursdays 6.30 for 7pm at The White Horse, Trowse Newton, Norwich NR14 8ST

**Life drawing group meetings :** monthly on Wednesdays 10–12noon at The United Reformed Church Hall, 40–42 Ipswich Road, Norwich NR4 6QR.  
Places need to be booked in advance.

Non-members may attend demonstrations and workshops for a small fee.



## Norwich Lifelong Learning

NLL is a new, Norwich-based not-for-profit community organisation offering daytime courses in the city centre, delivered by experienced tutors. Our courses are friendly and inclusive with no exams. They vary in length from one day to ten weeks and offer excellent value for money with affordable fees.

Whatever your interests – literature, local history, film, art, music, culture and more – you are sure to find something to inspire. Everyone is welcome and your unique perspectives and experiences are truly valued, whatever your interest or level. With no tests or exams, and no prior knowledge required, you can immerse yourself in the pleasure of expanding your knowledge and connecting with new people.

## Adult Learning in Norwich

Our courses

- are friendly and inclusive (no exams!)
- don't require any previous knowledge
- are led by experienced and qualified tutors
- cover literature, local history, film, art, culture and much more
- range in length from half days to 10 weeks
- offer excellent value for money



Our main venues:

The Norfolk & Norwich Millennium Library,  
The Forum, Norwich NR2 1AW

Charing Cross Centre,

St John Maddermarket, Norwich NR2 1DN

Telephone 01603 629557

**[www.norwichlifelonglearning.co.uk](http://www.norwichlifelonglearning.co.uk)**  
Or email [info@norwichlifelonglearning.co.uk](mailto:info@norwichlifelonglearning.co.uk)

# Norfolk Contemporary Art Society



*Far left:  
Cornelia Parker  
MBE,  
ncas talk at  
Norwich  
University  
of the Arts*

*Left: Patron  
Laurence  
Edwards talking  
to a member at  
the ncas AGM*

Norfolk Contemporary Art Society ncas is a charity promoting contemporary visual art and artists working across the region, supporting the art of today and the artists and curators of tomorrow.

ncas has acquired its own collection of paintings and sculpture which forms the basis of holdings of post-war art in the Norwich Castle Museum & Art Gallery.

The Society also raises funds for public art and sculptures, and mounts a lively programme of monthly events, mostly in Norwich, including lectures by national and regional artists, critics and art historians, studio and gallery visits, auctions, private views and members' parties.

Please check [www.n-cas.org.uk](http://www.n-cas.org.uk) for details of talks and events and updates of events listed

## ncas talks programme 2024

Thursday 19 September 2024, 7pm  
Blake Studio, Norwich School,  
The Close, Norwich NR1 4DD

**GLASS SCULPTOR : DAVID REEKIE**

Wednesday 16 October, 7pm  
Blake Studio, Norwich School,  
The Close, Norwich NR1 4DD

**RICHARD CALVOCORESSI CBE :  
CURATOR AND ART HISTORIAN,  
DIRECTOR GAGOSIAN LONDON**

Wednesday 6 November, 7pm  
Blake Studio, Norwich School,  
The Close, Norwich NR1 4DD

**PETER MARTIN & JON DUNLEAVY : ANIMATORS**

Wednesday 4 December 2024, 7pm  
Blake Studio, Norwich School,  
The Close, Norwich NR1 4DD

**DAVID HUGHES :  
ARTIST ILLUSTRATOR**

**Spring 2025 events**

**SIR RICHARD LONG, RA, CBE  
Sculptor**

**DR HANNAH HIGHAM**

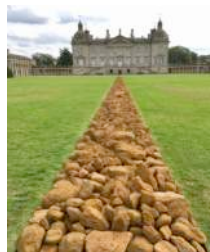
Senior Curator Royal Academy

Details on ncas website and next  
edition of Art in Norwich & Norfolk

**ncas** NORFOLK  
CONTEMPORARY  
ART SOCIETY



*Work by David Reekie,  
glass sculptor*



*Richard Long at Houghton Hall*

## NCAS AND NORWICH UNIVERSITY OF THE ARTS GRADUATE PRIZES 2024



Norwich  
University of the  
Arts Student Prize  
2024 Winners  
Ewan Ormond and  
Harriet Atkinson

Every year, ncas awards two prizes to Norwich University of the Arts Fine Art students – a **FINE ART** and **NEW MAKERS** prize, plus two commendations in each category.

On 18 June members of the ncas committee were guided around 'Gradfest' the undergraduate degree show, to select the prizewinners.

Craig Barber, Head of Fine Art, took the group around and his enthusiasm for the cohort of students and their dedication to producing an excellent degree show was infectious.

It was incredibly difficult to select one winner for each of the prizes but finally they reached a consensus with Harriet Atkinson winning the **FINE ART PRIZE** for her atmospheric paintings of guard dogs, with Commendations in this category going to Brad Ruml for his installation using AI to explore Jungian stereotypes and Yanni Ho for her installation of watercolour paintings.

The **NEW MAKERS PRIZE** encompasses making in its broadest form and was won by Ewan Ormond with his sculpture, video and poetry exploring pagan belief and ritual and Commendations went to Rollo Timothy George for his exploration of everyday signage in print, ceramic and timber and to Lauren Marie Wells for her tea table installation that included embroidery and bronze casting.



Left: paintings by  
Harriet Atkinson,  
winner of the £500  
Fine Art Prize



Left and below: installation  
by Ewan Ormond, winner of  
the £500 New Makers Prize





Norwich Castle is one of Europe's most important early medieval castles. *Royal Palace Reborn* is transforming the interior of the Keep by reinstating the floors and room layout of the medieval period. It will offer step-free access to all levels of the castle so everyone can experience a Norman royal palace and its many stories. The first phase of this exciting project is now complete with the opening of its new entrance. The stunning light-filled atrium includes a new shop, restaurant and education room. The museum houses spacious galleries with an exciting temporary exhibition programme alongside permanent fine art displays, natural history and decorative arts.

Norwich Castle Museum & Art Gallery,  
24 Castle Meadow, Norwich NR1 3JU England  
[www.norwichcastle.norfolk.gov.uk](http://www.norwichcastle.norfolk.gov.uk)

## Exhibitions and special displays

For a full list of exhibitions at Norwich Castle visit [www.norwichcastle.norfolk.gov.uk](http://www.norwichcastle.norfolk.gov.uk)

Saturday 19 October  
2024 to Sunday 23  
February 2025

### JMW TURNER AND CHANGING VISIONS OF LANDSCAPE

Turner's landscapes conveyed a full range of artistic, historical and emotional meanings.

This exhibition brings together, for the first time, four of his paintings of the Bridges at Walton – from Norwich Castle, Tate, and a private collection. Painted between 1805-1840s, each painting gives a completely different character to this one location.

Using Turner's multi-faceted vision as a starting point, this exhibition journeys through landscapes real, imagined, dramatic, comforting, nightmarish, fragile and beautiful. Featuring work by artists from the seventeenth century to the present it reveals the breadth and complexity of human concerns surrounding landscape, and our changing attitudes to the natural world.



*JMW Turner (1775-1851), Walton Bridges*  
© Norfolk Museums Service

Showing until Sunday 12 January 2025

### DANIEL & CLARA : THE LOST ESTATE

*The Lost Estate* is a new photographic series of six large-scale images by artists Daniel & Clara, which explores the relationship between humans and the natural world through imagined narratives, taking place in the gardens of a country estate.



*Daniel & Clara,  
A sudden downpour  
(The Lost Estate), 2023.  
Commissioned by  
Norwich Castle  
Museum & Art Gallery  
© courtesy the artist.*

Showing until February 2025

### HOLDING SPACE : MODERN AND CONTEMPORARY ART AT NORWICH CASTLE

*holding space* features nearly 50 works from Norwich Castle Museum and Art Gallery's Modern and Contemporary Art collection, dating from 1964 to the present day. The display presents new works in the collection from leading contemporary artists including Ibrahim Mahama, Beatrice Gibson and Florence Peake – some of which are on show for the first time.



Showing until June 2025

### CATHERINE MAUDE NICHOLS : MAKING HER MARK

This new exhibition reveals the work and fascinating life of Catherine Maude Nichols (1847–1923) and showcases a range of her work, with a particular focus on her drypoint etchings. Detailed evocations of Norwich cityscapes sit alongside atmospheric images of Norfolk's reed beds and meadows, along with scenes from her travels.



*Drawing, Catherine Maude Nichols,  
View of Norwich; watercolour on  
board, undated,  
© Norfolk Museums Service*

### Norfolk Museums Pass

An annual Norfolk Museums Pass gives you unlimited visits to all 10 Norfolk Museums, including special exhibitions. Visit [www.museums.norfolk.gov.uk](http://www.museums.norfolk.gov.uk) for more information.

## Norwich 20 Group



*Norwich 20 Group Annual exhibition in the Undercroft Gallery*

The Norwich 20 Group has a firmly established regional art presence with active involvement by its selected members, including exhibitions, monthly open meetings and weekly life drawing workshops plus talks by invited artists, licentiate members and recent graduates from NUA.

Over almost 80 years, membership has grown to more than 80 artists including painters, sculptors, installation and conceptual artists, printmakers and photographers.

Open meetings are at Park Lane Chapel, Norwich on first Tuesdays of the month from 7.30pm. Check website for details, free to attend, all welcome.

For more information see [www.norwich20group.co.uk](http://www.norwich20group.co.uk) and follow on Instagram @norwich20group



*Sarah Cannell*



*Rachel Furze*



*Steve Baker*



*Oliver Creed*

### WEEKLY LIFE DRAWING WORKSHOP

Autumn term 2024

Wednesday 11 September to Wednesday 4 December  
(no session in half term 30 October) 7.15pm–9.30pm.

At The Scout Hut, Colman Road, Norwich NR4 7HD

Welcome to arrive to set up from 7pm onwards  
Drop-in, £5 cash on the night. Free car park

# Norwich Print Fair



Anteros Arts,  
Fye Bridge Street

The Norwich Print Fair returns for a fortnight long FESTIVE FAIR at Anteros Arts Foundation this December.

This year there will be around 23 printmakers displaying framed and unframed work for sale. The exhibition across both galleries at Anteros will include at least four prestigious elected members of the Royal Society of Painter- Printmakers along with other regular favourites from across East Anglia! Check our website for full details! Norwich Print Fair was the first Print Fair in the UK and was started by renowned mezzotint artist Martin Mitchell back in 1995. Norwich Print Fair has always sought to champion traditional and contemporary printmaking techniques and to educate and involve the wider public with friendly Meet the Artists days. We look forward to seeing you there!

Tuesday 3 to Sunday 15 December 2024  
Anteros Arts Foundation, 11-15 Fye Bridge Street,  
Norwich NR31LJ

## THE FESTIVE NORWICH PRINT FAIR



David Jones. *Sailors' Reading Room, Southwold. (Linocut).*



Dandelion and Primrose, Vanessa Lubach

**Open daily 3 to 15 December 2024**  
**Evening Open View: Thursday 5 December 6-8pm**  
**Mondays to Saturdays 10-5pm**  
**Sundays 10-4pm**  
**Closes at 3pm on the last day, Sunday 15 December.**  
**Meet the artist days:**  
**Saturday 7 and Sunday 15 December**

The long awaited 25th celebrations WILL happen next September 2025 – follow us on social media to keep up to date with all our future plans!

[Website: norwichprintfair.co.uk](http://www.norwichprintfair.co.uk) [Insta/fb norwichprintfair](#)

# The Oak Circus Centre



*St Michael Coslany church*



The Oak Circus Centre is located in Oak Street, just north of the city centre in a mediaeval flint church, St Michael Coslany. It is a fully equipped circus training centre, performance venue, and venue for hire, available for parties, weddings, film, workshops and more.

Classes are delivered by local and international tutors and are tailored for all ages and abilities – you're never too old to run away with the circus!

Circus has an enormous range of benefits; from improving fitness, core strength, and balance, to confidence, motivation and discipline, to social interaction, trust and teamwork.

We also run in-house events including professional and student performances, Family Open Weekend (May) and Aerial and Acrobatic Convention (October). See the website for details

**St Michael Coslany Church, Oak Street, Norwich NR3 3AE**

**Email : [Info@theoakcircuscentre.org](mailto:Info@theoakcircuscentre.org)**

## OUR TRAINING AND CLASSES

- **Youth Programme:** From 3 to 16 years, youth classes run Mondays, Wednesday, Saturdays, a SEND program on Sundays.
- **Youth and SEND holiday programme** – Check the website or contact the Centre for dates
- **Adult classes:** Monday–Thursday evenings all year round in Aerial skills from beginners to advanced, Aerial Yoga, Acro Yoga, Handstands, and Hula Hoops. Personal Training and one-to-one sessions available with a wide range of disciplines and approaches.

## OUTREACH

- **Circus training** as modules for schools and Universities in the region
- **Circus taster sessions** for community events and festivals – indoors and outdoors.
- **Funded projects** working with community groups, arts organisations or charities.

## PRE-PROFESSIONAL & PROFESSIONALS

- **Circus Academy Norfolk:** Year-long programme for ages 8–18 who want to take circus training seriously
- **Pre-Professional course:** 8 month course aimed at ages 16–25 who are interested in pursuing a career.
- **One-to-one training** for professionals that want to improve their technique.
- **Professional Training and rehearsal space.**

For a full list see [www.theoakcircuscentre.org](http://www.theoakcircuscentre.org)

# SHAPE OUR WORLD

Join us on  
our Open Days





Scan to book  
your place

[norwichuni.ac.uk/open-days](https://norwichuni.ac.uk/open-days)

The only specialist creative arts and design  
University to earn a triple Gold TEF rating

Teaching Excellence Framework (TEF) 2023

    @norwichuniarts

**NORWICH  
UNIVERSITY  
OF THE ARTS**



originalprojects; is an artist-led organisation based in Great Yarmouth, engaging with communities, industries and heritage to uncover, support, create and promote cultural experience, assets and enterprise in the town.

PRIMEYARC is a space managed by originalprojects; for diverse creative communal collaborations. It presents an evolving public programme of exhibitions and events, alongside studio and workshop space for artists and makers, and a place for creative production to happen in a former department store in Great Yarmouth.

### Exhibitions at PRIMEYARC

In the former Debenhams, Market Gates Shopping Centre, Great Yarmouth NR30 2BG

Open Wednesdays, Fridays, Saturdays, Sundays, 12-4pm

17 September to 21 November 2024

#### LUKE GOTTELIER : GREATEST HITS

A collision of contemporary painting and British music culture, Luke Gottelier has created an installation of paintings with records fixed into the surface of the oil paint. He has also modified a Technics turntable so that the paintings can be played like records.

This Frankenstein record player sits on a plinth specially designed for the exhibition by Ben Kelly, the designer of the Hacienda. The plinth supports the turntable and houses the speakers that amplify the distorted, deranged sound that the paintings make. The paintings will be played intermittently throughout the exhibition.



23 November to 22 December 2024

#### BEER MAT PAINTINGS : MARTIN BATTYE

For Martin, these beer mat paintings started as a kind of response to Covid, being freely available and common in scale.



# OUTPOST



OUTPOST is an artist-run charity, based in Norwich, committed to the uncompromising presentation of contemporary art. Founded in 2004, the charity runs a gallery which currently hosts a programme of five exhibitions per year, alongside a series of offsite projects, events, and artists' editions.

OUTPOST also runs an affordable studio complex at Gildengate House for over 80 artists and practitioners. OUTPOST has established itself as one of the largest studio providers for artistic activity in the east of England.

OUTPOST Gallery, 10b Wensum Street, Tombland,  
Norwich, Norfolk NR3 1HR Tel: 01603 612428  
open Thursdays to Sundays, 12–6pm during exhibitions

The charity runs two artistic programmes; The OUTPOST Core Programme supports upcoming and emerging artists, students, and OUTPOST Members. The OUTPOST Creative Programme, which is part funded by Arts Council England, focuses solely on supporting individuals from working class/ lower socio-economic backgrounds.

OUTPOST operates a membership scheme which is open to anyone to join and offers an annual members exhibition, residencies, and other member only opportunities.

The charity has also supported the professional development of more than 50 individuals through its volunteer Steering Committee, providing hands-on training and experience of running a contemporary art space and studios.

The OUTPOST Gallery in Tombland has exhibitions throughout the year alternating member shows with invited artists from outside the area.

After celebrating their 20th anniversary in 2024, they are taking a summer break before the autumn

Check their website [www.norwichoutpost.org](http://www.norwichoutpost.org) for updates on exhibitions for autumn/winter 2024–2025.

For updates follow OUTPOST on Facebook, Instagram and Twitter. Enquiries email [questions@norwichoutpost.org](mailto:questions@norwichoutpost.org)



### Royal Drawing School Online – classes for all

The Royal Drawing School is an independent, not-for-profit school which offers in-depth, quality tuition in drawing from observation. We run over 350 different full and part-time drawing courses each year for adults and children, from beginner to postgraduate-level. These take place in our studios in Shoreditch (London) and online. Courses are taught by an experienced faculty of over 100 tutors, who are all practicing artists.

Our digital programme offers a range of online course options from drop-in live streamed drawing events, one week holiday courses in painting, and sustained 5 or 10 week term-time drawing courses open to all abilities.

We also offer an intensive 3-month and a one-year art practice development programme designed for arts graduates. A range of concessions and discounts are available on our term-time courses making them available to as wide an audience as possible.

[Scan here for more information about our online courses.](#)



## Royal Drawing School in Norwich

The Royal Drawing School's Young Artists Programme helps children develop their drawing abilities and sustain their enthusiasm for self-expression within a supportive artist-led environment.

Autumn Term : 21 September to 23 November 2024

All  
levels  
welcome

Drawing Club: Norwich (10–14 year olds) 11am–1pm

Young Associates: Norwich (15–18 year olds) 2–4pm

Location: Second floor, St Mary's House, Duke Street,  
Norwich, Norfolk NR3 1QA

Cost: £165 for 10 sessions. Scholarships are available.

Weekly sessions run in 10-week terms from St Mary's House in Norwich. Booking is open via the website [www.royaldrawingschool.org](http://www.royaldrawingschool.org)

Students will spend time drawing from the model and sets in the studio or from the streets and green spaces in the historic town centre with references to contemporary art and history.

The programme is taught by professional artists who are experienced in teaching children.

Young Associates is particularly useful for those making portfolios for applications to art and design courses.

Our courses are open to all levels and are a chance to meet and learn with other young people in a creative community.

## Classes for Young Artists



Scan here for more information  
about our Young Artists courses.



## Sainsbury Centre at UEA



The Sainsbury Centre is a world class art museum with a unique perspective on how art can foster cultural dialogue and exchange. Following a radical relaunch in 2023 the Sainsbury Centre is the first museum in the world to formally recognise the living life-force of art, enabling people to build relationships across an arts landscape.

One of the first museums in the world to display art from around the globe and from all time periods equally and collectively, Sir Robert and Lady Lisa Sainsbury created one of the most respected yet non-conformist art collections.

This season, the Sainsbury Centre asks *Why Do We Take Drugs?* From alcohol to ayahuasca and kava to caffeine, this season uses art to take visitors on a journey of investigation, inviting audiences to explore the world of global drug cultures from illegal to familiar across one mind-blowing museum space.

### Exhibitions

Saturday 14 September 2024  
to Sunday 2 February 2025

#### POWER PLANTS : INTOXICANTS, STIMULANTS AND NARCOTICS

For millennia people have used the psychoactive properties of plants as an integral part of social, ceremonial and religious life. The show will reference global artefacts that are connected with their traditional consumption, featuring objects, sculpture, yarn paintings, digital works, textiles, plus a selection of Japanese art.

Saturday 14 September 2024 to  
Sunday 2 February 2025

#### AYAHUASCA & ART OF THE AMAZON

This exhibition considers the impact of the mind-altering, psychotropic vine – ayahuasca – within Western Amazonian social life. It explores how the ritual consumption of ayahuasca is



*Anabel Diaz, Untitled.*

Copyright: The Artist.

Image courtesy of

Bienal de Arte Huichol / Arte Yawi



*Unknown artist, jar, Shipibo  
Konibo, Peru, date unknown,  
painted terracotta Courtesy of  
private collection*

intimately linked to artistic production of ceramics, textiles, sculpture, painting and photography. It is a rare opportunity to appreciate the breadth of Amazonian art.

**Saturday 14 September 2024 to Sunday 2 February 2025**

### **POWER PLANTS: INTOXICANTS, STIMULANTS AND NARCOTICS**

In many parts of the world, plants of power – whether this be spiritual, economic, mind-altering or cultural – are regarded as sacred. They are valued for their capacity to deepen human relationships, facilitate communication with ancestors, and heal the sick.

*Power Plants: Intoxicants, Stimulants and Narcotics* will



*Lindokuhle Sobekwa, Thabang waking up in the early hours of the morning. Thokoza, Johannesburg, South Africa, 2015, from the Nyaape project. Copyright: Lindokuhle Sobekwa / Magnum Photos*



*Graham MacIndoe, My Addiction. Copyright: Graham MacIndoe*

### **Until 20 October 2024 THE CAMERA NEVER LIES : CHALLENGING IMAGES THROUGH THE INCITE PROJECT**

Featuring legendary photographers including Don McCullin, Robert Capa and Dorothea Lange, as well as modern practitioners, this

extensive exhibition charts a global century of iconic documentation and manipulation, asking to what extent images have shaped or created a false understanding of major global events.



*Richard Mosse, Poison Glen. Photo: Richard Mosse*

**Saturday 23 November 2024 to Sunday 27 April 2025**  
**LINDSEY MENDICK : HOT MESS**

Lindsey Mendick's newly commissioned ceramics will be displayed amongst the Sainsbury Centre's permanent collection and reveal her reliance on anti-depressants and alcohol, tackling social taboos and candidly addressing stigmas.

**October 2024 to February 2025**  
**IVAN MORISON : TOWARDS THE WEIRD HEART OF THINGS**

New four-meter-high, site-specific sculptures by artist Ivan Morison, constructed from abundant East Anglian agricultural organic materials including hemp, present nature as a vital drug for human health and well-being.

Our Universal Ticket works on a 'Pay If and What You Can' basis and gives access across the museum.

Opening times: Tuesday–Friday 9am–6pm (exhibitions from 9.30am), Saturday–Sunday 10am–5pm (last exhibition entry 4pm).  
Closed Mondays and bank holidays.

## SCULPTURE PARK

The Sculpture Park is a perfect place to enjoy striking art outdoors all year round. Download a trail map or family pocket map from the centre's website or pick them up at Gallery Reception. The Sculpture Park boasts inspiring work by notable artists such as Henry Moore, Anthony Caro, Elisabeth Frink, Laurence Edwards, Lynn Chadwick, Liliane Lijn and Antony Gormley.

The Sculpture Park is open during daylight hours.

Visit [sainsburycentre.ac.uk](http://sainsburycentre.ac.uk) for more information and to book activities for all ages. Tel: 01603 593199 Email: [scva@uea.ac.uk](mailto:scva@uea.ac.uk)  
Facebook, Twitter & Instagram: @sainsburycentre



*Usagi Kannon, L.240, 2012–2020, Leiko Ikemura. Courtesy the artist. Photo Kate Wolstenholme*

Download  
Sculpture  
Trail map



Scan for  
Sainsbury Centre  
website

## FOR ADULTS, YOUNG PEOPLE & FAMILIES

### Big Sundays

Drop in on the first Sunday of each month to look, explore, draw and more with a warm welcome from the Sainsbury Centre Learning Team.

**From 10.30 am: Family Sunday Activity.** Meet an artwork and make an artwork.

**From 11am: Community Space.** Take part in our community-focused collaborative project.

[www.sainsburycentre.ac.uk/whats-on/free-family-sundays/](http://www.sainsburycentre.ac.uk/whats-on/free-family-sundays/)

### Mini Studio

Second Tuesday of each month during term time, 10.30am–12pm. Suitable for 0–5 years old, accompanied by an adult.

Pay what you can (our suggested donation of £9 covers exhibition entry, materials and a snack) Artist-led workshops for parents, carers, and pre-school children. Take part in relaxed guided exploration followed by multi-sensory play. Workshops are available to book from the start of each month.

[www.sainsburycentre.ac.uk/whats-on/mini-studio-2](http://www.sainsburycentre.ac.uk/whats-on/mini-studio-2)



*Big Sunday in action in the Living Area. Photo Rachel Anstey-Sanders*

## St Etheldreda's Artists' Studios



*St Etheldreda's Church by Richard Cleland*

St Etheldreda's Artists' Studios is housed in the beautiful church of St Etheldreda, opposite Wensum Lodge in King Street. It is the longest running artists' studios in the city in one of the city's oldest streets.

Currently twelve members have working spaces in the church. Some first Saturdays of the month the studios are open from 12 to 4pm to show an exhibition of fresh work by some or one of the member artists. All are welcome.

St Etheldreda's Artists Studios, King Street, Norwich  
Norfolk NR1 1QH.

Contact: Frances Martin [francesmartin67@gmail.com](mailto:francesmartin67@gmail.com)



*Nowhere Cottage by Richard Cleland*

*Joey La Meche*

### Visit St Etheldreda Studios, King Street

Open Saturdays from 12–4pm

5 October: **JOEY LAMECHE**

2 November: **RICHARD CLELAND**

7 December: **WINTER WARMER GROUP SHOW**

Closed Jan/Feb and back from 1 March 2025 with a group show.

**Saturday 7 and Sunday 8 September 2024, 10am–5pm**

**OPEN AS PART OF HERITAGE OPEN DAYS WEEKEND**

Exhibition of artworks by studio artists plus a chance to look around our church, with monuments and Norman arch porch entrance, and round tower.

See St Etheldreda's Studios on Instagram for updates on events and more info. Instagram [@st.eths.art](https://www.instagram.com/st.eths.art)

## Time and Tide Museum, Gt Yarmouth



Set in a preserved Victorian herring curing works the multi award-winning Time and Tide Museum tells the unique story of Great Yarmouth from its prehistoric origins, its fishing and maritime history, right up to the present day.

The museum also has a busy events calendar and the galleries host regular exhibitions, alongside permanent displays and activities suitable for all ages and interests.

Time and Tide Museum of Great Yarmouth Life,  
Blackfriars Road, Great Yarmouth, Norfolk NR30 3BX  
[www.timeandtide.norfolk.gov.uk](http://www.timeandtide.norfolk.gov.uk)

## Special exhibitions

Saturday 12 October 2024 to  
Sunday 9 February 2025

### MALORIE BLACKMAN : THE POWER OF STORIES

This exhibition on loan from the British Library celebrates the work and career of renowned children's and Young Adult author Malorie Blackman. It looks at the inspiration for her work, the impact she has had on younger generations and the way she has inspired others to work and create.

Saturday 21 September 2024 to  
Wednesday 1 January 2025

### 'GU'UN THE FISH N' THAT'

This sound installation by Beverley Carruthers creates a soundscape featuring voices of the fisher girls that followed the herring fleet up and down the east coast of Britain.

For information on all the Norfolk Museums including others in Great Yarmouth, visit [www.museums.norfolk.gov.uk](http://www.museums.norfolk.gov.uk)



*Illustration by Dapo Adela,  
presented to Malorie Blackman  
with the PEN Pinter Prize, 2022*



*Barbara Alliston,  
© Beverley Carruthers*

## Arts & culture in Great Yarmouth



There is a growing number of arts projects in Great Yarmouth recently, in newer venues as well as old favourites. Over the last few years, money has been invested and as a result the arts scene is growing. The Great Yarmouth Preservation Trust is also doing a great job restoring heritage for the benefit of the town.

St George's Theatre is a major venue with theatre, music and shows all year round. The theatre was refurbished a few years ago and has a fantastic interior – it is well worth a visit as well as checking out the programme which includes a wide range of repertoire from local productions to national touring shows.

original projects; occupies the former Debenhams store, now called **PrimeYarc**, a creative hub and gallery that truly connects with the community around it (see page 42).

**Great Yarmouth Hippodrome** has four major circus spectaculars a year as well as hosting concerts and shows from other producers. The Hippodrome is a unique place and a must-see venue – it never disappoints! The **Empire** on Marine Parade also has a weekly music offer with Djs and bands as well as street food, beer and cocktails.

**Out There Arts** (formerly Seachange) also runs regular circus and performing arts classes in their home at the Drill House as well as the epic **Out There Festival** which has moved to May from its previous time in September and **Fire On The Water** which brings many visitors to the town to enjoy home-grown and international circus and outdoor arts performances in St George's Park and other locations around the town.

They have recently received funding to renovate the large Ice House building next to Haven Bridge as a culture hub.



*Carnival at The Drill House, York Road*



*I Love Great Yarmouth mural at Joyland along Marine Parade in Great Yarmouth, part of the Represent Mural Project. Photo Ruben Cruz*

There is a thriving street art scene including **Represent CIC** which has created a trail of murals around the town in a grass-roots effort to spread public street art that embellishes and enriches the visual landscape of Great Yarmouth as well explaining the heritage and culture of the town.

The town itself is a cultural wonderland with traditional seaside style on one side – sometimes surreal as a Cinderella carriage comes around the corner – the famous Giant Snails, Joyland, Model Village and huge sandy beach complete with donkey rides.

On the other side, a rich maritime and industrial history on the river Yare on the docks at South and North Quay. In the centre, the marketplace, The Rows and historic buildings are testament to a trading past. Anna Sewell lived in a cottage near the Minster and Charles Dickens wrote and set much of David Copperfield in the town. More recently Greek, Portuguese and Eastern European residents have brought a wide range of cafés, bars and restaurants as well as traditional music and events. The market (famous for its chips and seagulls) has been recently refurbished with new stalls added and the wonderful Victorian Winter Gardens along the seafront is about to be restored which is fantastic.

For more information about arts and culture in the town of Great Yarmouth please see the page online at [www.artinnorwich.org.uk/yarmoutharts.html](http://www.artinnorwich.org.uk/yarmoutharts.html)

The **Great Yarmouth Arts Festival** happens annually, taking place in September 2024.

**Freshly Greated** is a programme of community activities funded under Creative People and Places and reaches areas of Yarmouth often without cultural opportunities.

**Time and Tide Museum** (see page 66) has a regular contemporary art programme curated by Norfolk Museums, as well as permanent displays which describe the history of the fishing industry on which the town was built **Great Yarmouth Minster** is the main venue for organ recitals and classical music, again a spectacular heritage building in the north of the town.

The **Venetian Waterways and Boating Lake** is an Edwardian seaside attraction near the North Beach that that was restored as a result of Lottery funding. You can walk in the gardens, hire a boat or have a cuppa in the tearoom.



## THE UNDERCROFT GALLERY

The Undercroft is a raw and robust space found at the back of Norwich Market, under the Memorial Gardens in front of City Hall in the city centre – postcode NR2 1NE.

Owned and managed by Norwich City Council it is made available for artists and groups to curate exhibitions at a minimal charge – contact [events@norwich.gov.uk](mailto:events@norwich.gov.uk).

The entrance is tucked away down a set of steps – it is Norwich's stunning secret venue.

## EXHIBITIONS SUMMER/AUTUMN 2024

Wednesday 7 to Thursday 29 August 2024

**LONELY ARTS CLUB: BALANCE**

A yearly showcase of current work by a diverse, yet dedicated, group of Norwich based contemporary artists.

Monday 4 November to Saturday 23 November 2024

**NORWICH & DISTRICT PHOTOGRAPHIC SOCIETY :  
107th ANNUAL PHOTOGRAPHIC EXHIBITION**

Showcase of the Norwich & District Photographic Society and the work of its members to the General Public. This is the 107th Annual Exhibition held in Norwich since first Exhibition held in March 1904.

Exhibitions are often booked pop-up style at short notice so for future exhibitions please check [www.artinnorwich.org.uk/the-undercroft.html](http://www.artinnorwich.org.uk/the-undercroft.html)



# PROMOTE YOUR EVENT OR VENUE IN NORWICH & NORFOLK



## ARTS ROUNDUP LEAFLET DISTRIBUTION SERVICE

An information service run by What's On Norfolk  
If you would like to display your creative, arts and cultural events A5 and DL programmes, flyers and leaflets on our network of spinners, please contact us at [info@theshiftnorwich.org.uk](mailto:info@theshiftnorwich.org.uk) or visit [www.whatsonnorfolk.co.uk](http://www.whatsonnorfolk.co.uk)

## A quick guide to art in Norwich



*View of Norwich from City Hall towards Norwich Castle*

Norwich is a medieval city which, in its hey-day, rivalled London in terms of size and was, for many years, England's second city, being only 100 miles from the court of London. It was a wealthy city with its fame built on the textile trade, weaving and particularly wool. Nearly half of the population was French, Dutch or Flemish and engaged in the weaving trade – hence the name of the football club, the Canaries, called after the birds which the weavers kept for company. In the Industrial Revolution, Norwich was off the beaten track for commerce and transport and so attracted artists, philosophers and radical thinkers, and was home to the famous Norwich School of Painters. Many religious non-conformists also settled here and the place became a hotbed for artists and writers, as it is today. It is also now a UNESCO City of Literature and twinned with Rouen, in Normandy.

Amongst its many cultural assets Norwich can claim:

Norwich University of the Arts, one of the best universities for courses in animation and film, fine art and illustration, architecture, games design, graphic design, fashion, media and much more, including East Gallery in St Andrew's Street.

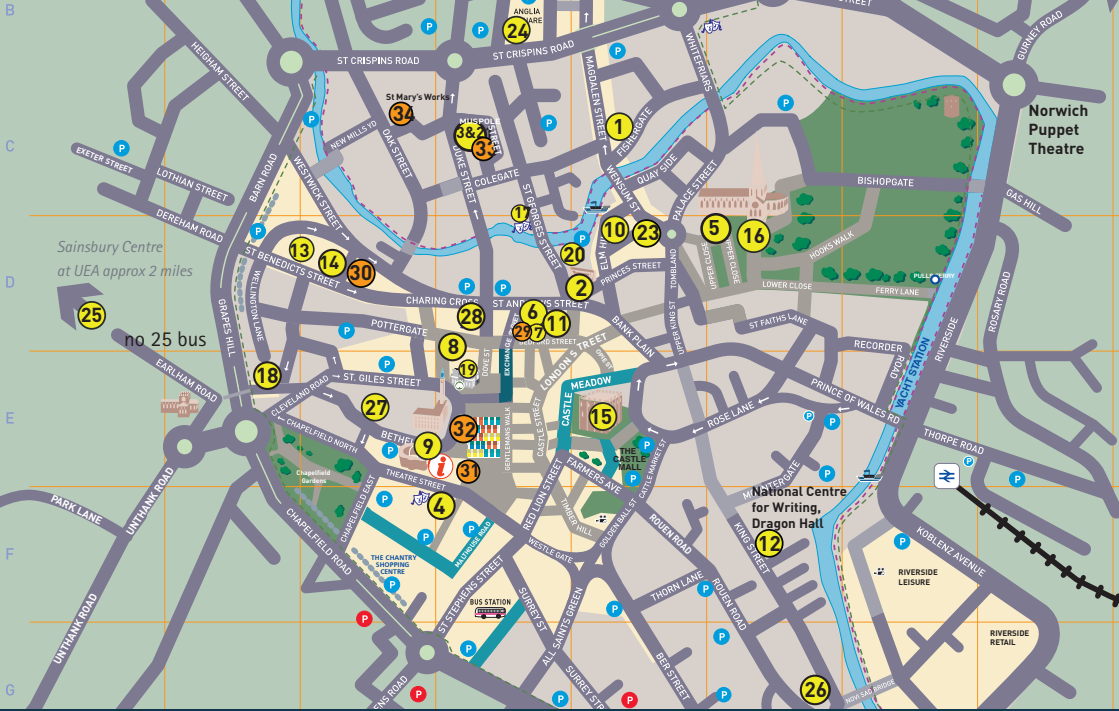
Norwich Castle and the Sainsbury Centre at UEA are world-class venues, attracting national-level touring shows, with permanent collections of World Art as well as work by Picasso, Henry Moore, Francis Bacon, Modigliani, Degas and local masters – Munnings and the Norwich School of Painters including work from contemporary artists such as Colin Self, and now a growing sculpture park at UEA.

Norfolk and Norwich Festival in May, an international multi-arts annual festival with 17 days of concerts, outdoor arts and theatre, both mainstream and left-field, as well as an increasingly innovative and site-specific visual arts programme.

Norwich Arts Centre is a multi-arts venue with a programme which includes live art, music and performance and the Norwich School has an events programme with a regular cycle of exhibitions in the Crypt Gallery in the Cathedral Close.

There are a number of artist-led galleries and studios, notably OUTPOST, Anteros Arts and St Etheldredas – and some well-established and very active, artists' groups such as Norfolk Contemporary Art Society, Norwich Print Fair, Norwich 20 Group and the Lonely Arts Club.

Venues such as St Mary's Works, Assembly House, The Undercroft and Greenhouse Gallery host exhibitions along with several commercial galleries such as Fairhurst and Mandell's. As well as Art in Norwich partners, there are over 900 practising visual artists and groups in Norfolk and a thriving underground arts scene in addition to the main institutions. [www.artinnorwich.org.uk](http://www.artinnorwich.org.uk)



# ART AND CULTURAL VENUES IN THE CITY OF NORWICH

## Art in Norwich members and venue details

- 1 Anteros Arts Foundation, 7–15 Fye Bridge Street, NR3 1LJ  
Tel: 01603 766129 [www.aterosfoundation.com](http://www.aterosfoundation.com)
- 2 The Halls, St Andrew's Plain, Norwich  
(Closed for refurbishment 2024–2025)
- 3 Artpocket, Lion House, St George's Works, Muspole Street, Norwich  
[www.artpocket.co.uk](http://www.artpocket.co.uk): 01603 613875
- 4 The Assembly House, Theatre Street, NR2 1RQ  
Tel: 01603 626402 [www.assemblyhousenorwich.co.uk](http://www.assemblyhousenorwich.co.uk)
- 5 Crypt Gallery, Norwich School Chapel, The Close, Norwich NR1 4DD  
Tel: 01603 728430 [www.norwich-school.org.uk](http://www.norwich-school.org.uk)
- 6 East Gallery, St Andrew's Street, Norwich NR3 1BB  
Tel: 01603 610561 [www.norwichuni.ac.uk](http://www.norwichuni.ac.uk)
- 7 Fairhurst Gallery, Bedford Street, Norwich NR2 1AG  
Tel: 01603 614214 [www.fairhurstgallery.co.uk](http://www.fairhurstgallery.co.uk)
- 8 Fire & Flux Ceramics Gallery & Studios, Pottergate, Norwich  
Tel: 01603 322796 <https://fireandfluxceramics.wixsite.com>
- 9 The Forum, Millennium Plain, NR2 1TF  
Tel: 01603 727950 [www.theforumnorwich.co.uk](http://www.theforumnorwich.co.uk)
- 10 Mandell's Gallery, Elm Hill, Norwich NR3 1HN  
Tel: 01603 626892 [www.mandellsgallery.co.uk](http://www.mandellsgallery.co.uk)
- 11 Museum of Norwich, Bridewell Alley, Norwich NR2 1AQ  
Tel: 01603 629127 [www.museums.norfolk.gov.uk](http://www.museums.norfolk.gov.uk)
- 12 National Centre for Writing, Dragon Hall, 115–123 King St, Norwich NR1 1QE  
<https://nationalcentreforwriting.org.uk/>
- 13 Norwich Arts Centre, St Benedicts Street, Norwich NR2 4PG  
Tel: 01603 660352 [www.norwichartscentre.co.uk](http://www.norwichartscentre.co.uk)
- 14 Norwich Art Supplies, 37 St Benedicts St, Norwich NR2 4PG  
Tel: 01603 620229 [www.norwichartsupplies.co.uk](http://www.norwichartsupplies.co.uk)
- 15 Norwich Castle Museum & Art Gallery, Norwich Castle, Castle Meadow, NR1 3JU  
[www.museums.norfolk.gov.uk](http://www.museums.norfolk.gov.uk)
- 16 Norwich Cathedral, The Close, Norwich NR1 4EH  
Tel: 01603 218300 [www.cathedral.org.uk](http://www.cathedral.org.uk)
- 17 Norwich Playhouse, St George's Street, Norwich  
[www.norwichplayhouse.co.uk](http://www.norwichplayhouse.co.uk)
- 18 Norwich Studio Art Gallery, 77 Upper St Giles St, Norwich NR2 1AB  
Tel: 01603 492093 [www.studioart.org.uk](http://www.studioart.org.uk)
- 19 Moosey Norwich, 3, Labour in Vain Yard, Norwich NR2 1JD  
[www.mooseyart.co.uk](http://www.mooseyart.co.uk)
- 20 Norwich University of the Arts, St George's Street, NR3 1BB  
Tel: 01603 610561 [www.norwichuni.ac.uk](http://www.norwichuni.ac.uk)
- 21 Norwich Hackspace, Lion House, Muspole Street, Norwich  
Tel: 07946 261651 [www.norwichhackspace.org](http://www.norwichhackspace.org)
- 22 Oak Circus Centre, St Michael Coslany Church, Oak Street, Norwich NR3 3AE  
Email : [Info@theoakcircuscentre.org](mailto:Info@theoakcircuscentre.org)
- 23 OUTPOST Gallery, 10b Wensum Street, NR3 1HR  
Tel: 01603 612428 [www.norwichoutpost.org](http://www.norwichoutpost.org)
- 24 OUTPOST Studios, Gildengate House, Upper Green Lane, Norwich NR3 1AX  
[www.norwichoutpost.org/studios](http://www.norwichoutpost.org/studios)
- 25 Sainsbury Centre, University of East Anglia, NR4 7TJ  
Tel: 01603 593199 [www.sainsburycentre.ac.uk](http://www.sainsburycentre.ac.uk)
- 26 St Etheldreda's Art Studios, King Street, Norwich  
Tel: 01603 631928
- 27 Greenhouse-Gallery, 42–46 Bethel Street, Norwich NR2 1NR  
[www.greenhousetrust.net](http://www.greenhousetrust.net)
- 28 Strangers' Hall, 4 Charing Cross, Norwich NR2 4AL  
Tel: 01603 667229 [www.museums.norfolk.gov.uk](http://www.museums.norfolk.gov.uk)

## WHERE TO GO IN NORFOLK

As well as exhibition venues listed in this booklet we have included other locations of interest and that often have exhibitions. The whole Norfolk coast is beautiful and varied and the coast road offers splendid views over saltmarshes and beaches. The north coast is especially good for bird watchers, seals, sailing and fishing. A drive along the coast will take you through many picturesque villages with galleries and craft shops. Inland, market towns are also local hubs of activity. To the west and south are the Brecks – open heathland and forests.



## ART IN NORFOLK

Norwich is set in the stunning county of Norfolk. It is the centre of a busy rural hinterland, varied and beautiful. Because there is space, there are over 800 visual artists working here and it has a long history of being a creative place. And the skies, the light and the landscapes have been an ongoing source of inspiration too. Across the county you will find many galleries and exhibitions in larger venues and also pubs and cafés.

For more, check local tourist information, the National Trust properties, Wolterton Hall, Mannington Hall and the market towns of Diss, Wymondham, Loddon and Harleston to the south, Holt, Aylsham, Reepham, Cromer, Sheringham, Salthouse, Blakeney to the north, Great Yarmouth and Lowestoft to the east, King's Lynn and Houghton to the west.

And if you fancy some non-art time, you can't beat the Norfolk coastline, the Brecks and the famous Norfolk Broads.

Explore Norfolk – you will get hooked!

To include Suffolk as well, look at [www.visiteastofengland.com/](http://www.visiteastofengland.com/) head-east

## Venues used by members for exhibitions and events

- 29 The Granary, 5 Bedford Street, Norwich NR2 1AL  
Tel: 01603 697107
- 30 St Margaret's Church of Art, St Benedict's Street, Norwich  
NR2 4AQ \*Closed for refurbishment
- 31 St Peter Mancroft Church, Hay Hill, Norwich NR2 1QQ  
The Undercroft, beneath Memorial Gardens, Norwich Market  
\*Not open all the time – email [events@norwich.gov.uk](mailto:events@norwich.gov.uk)
- 32 Royal Drawing School and Lion House Studios, Lion House,  
St George's Works, Muspole Street, Norwich NR3 1DJ
- 33 Shoe Factory Social Club, St Mary's Works, St Mary's Plain,  
Norwich NR3 3AF [www.shoefactorysocial.club](http://www.shoefactorysocial.club)

## Member organisations without venues

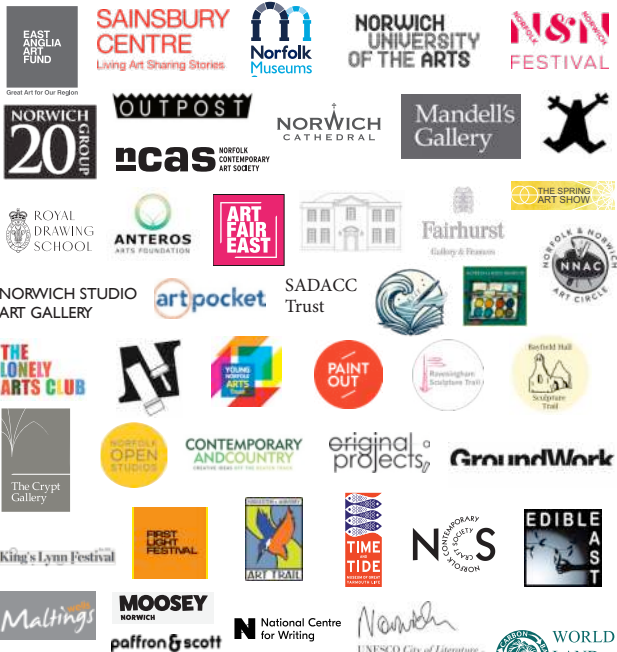
Anglian Potters [www.anglianpotters.org.uk](http://www.anglianpotters.org.uk)  
Contemporary & Country [www.contemporaryandcountry.com](http://www.contemporaryandcountry.com)  
Breckland Artists [www.brecklandartists.com](http://www.brecklandartists.com)  
Lonely Arts Club [www.thelonelyartsclub.org.uk](http://www.thelonelyartsclub.org.uk)  
Norfolk & Norwich Festival [www.nnfestival.org.uk](http://www.nnfestival.org.uk)  
Norfolk Contemporary Art Society [www.n-cas.org.uk](http://www.n-cas.org.uk)  
Norfolk & Norwich Art Circle [www.nnartcircle.com](http://www.nnartcircle.com)  
Norfolk Open Studios [www.norfolkstudios.org.uk](http://www.norfolkstudios.org.uk)  
Norwich 20 Group [www.norwich20group.co.uk](http://www.norwich20group.co.uk)  
Paint Out Norwich [www.paintoutnorwich.org](http://www.paintoutnorwich.org)  
Waveney & Blyth Arts [www.waveneyandblytharts.com](http://www.waveneyandblytharts.com)

Art in Norwich is produced and published by Marion Catlin,  
Culture Shift Norwich email: [info@theshiftnorwich.org.uk](mailto:info@theshiftnorwich.org.uk)  
Tel 07946 261651 [www.theshiftnorwich.org.uk](http://www.theshiftnorwich.org.uk) E&OE

## Venues around Norfolk see map on page 58

- 35 Barrington Farm, Walcott, Norfolk NR12 0PF Tel: 01692 650707
- 36 Bayfield Hall, Letheringsett with Glandford Norfolk NR25 7JN
- 37 Bircham Gallery, 14 Market Place, Holt NR25 6BW  
[www.birchamgallery.co.uk](http://www.birchamgallery.co.uk) Tel: 01263 713312
- 38 The Corn Hall, 10 St Nicholas St, Diss IP22 4LB  
Tel: 01379 652241 [www.thecornhall.co.uk](http://www.thecornhall.co.uk)
- 39 Cromer ArtSpace, The Esplanade, Cromer NR27 9HE  
<https://cromer-artspace.uk>
- 40 Fermoy Gallery & Shakespeare Barn, St George's Guildhall,  
29 King Street, King's Lynn Norfolk PE30 1HA
- 41 GroundWork Gallery, 17 Purfleet, King's Lynn, Norfolk PE30 1ER  
[www.groundworkgallery.com](http://www.groundworkgallery.com)
- 42 Houghton Hall and Gardens, King's Lynn PE31 6UE  
[www.houghtonhall.com](http://www.houghtonhall.com) Tel 01485 528569
- 43 Harleston & Waveney Art Trail, Harleston [www.hwat.org.uk](http://www.hwat.org.uk)
- 44 King's Lynn Town Hall, Saturday Market Place
- 45 Mannington Hall, Itteringham, Norfolk NR11 7BB
- 46 The School House Gallery, Wighton, Wells-next-the-Sea  
N. Norfolk NR23 1AL <http://alfredcohen.org/about/>  
originalprojects; PRIMEYARC, former Debenhams, Market  
Gates, Great Yarmouth, Norfolk [www.originalprojects.space](http://www.originalprojects.space)
- 47 Ravensingham Centre, Ravensingham, Norfolk NR14 6NU  
[www.ravensinghamsculpturetrail.com](http://www.ravensinghamsculpturetrail.com)
- 49 St Nicholas Church, Salthouse, North Norfolk
- 50 Time & Tide Museum, Blackfriars' Road, Great Yarmouth,  
Norfolk NR30 3BX [www.museums.norfolk.gov.uk](http://www.museums.norfolk.gov.uk)
- 51 Wells Maltings, Wells-next-the-Sea, Staithe Road,  
Norfolk NR23 1AN [www.wellsmaltings.org.uk](http://www.wellsmaltings.org.uk)
- 52 Designermakers21, 21 St Nicholas St, Diss IP22 4LB

Art in Norwich and Norfolk partners are:



*'The city of Norwich has many fans, of which I am one. It has a fantastic and historic urban fabric, a glorious rural hinterland and an unparalleled coastline of which I am proud to be able to tell people. I support the football club here and applaud the initiatives which I see taking place all over the city, wrought by the many excellent cultural organisations who work together to ensure an excellent quality of life for the citizens and those who are lucky enough to visit or stay.'*

*Stephen Fry.*

Art in Norwich is published by Culture Shift twice a year, Spring and Autumn, and is funded by its partners working together to showcase the great art and culture in Norwich and Norfolk all year and every year.

Thank you.

[www.artinnorwich.org.uk](http://www.artinnorwich.org.uk)



Printed by Barnwell Print Ltd, Aylsham, Norfolk  
on paper Carbon Balanced with the World Land Trust



www.carbonbalancedprinter.com  
Barnwell Print Reg. No. 2102

6-15 Sep 2024

# Heritage Open Days

Free heritage events in  
Norfolk, for everyone!



ALL  
EVENTS  
ARE FREE

Coordinated by

the  
**forum**

#NorfolkHODs

[norfolkheritageopendays.co.uk](http://norfolkheritageopendays.co.uk)



heritage open days

## Sir Thomas Browne in Eaton Park



*Eaton Park Pavilion photo by Stuart Beard*

In 2007, a set of sculptures were commissioned to honour physician, philosopher, writer and polymath, Sir Thomas Browne (1605-1682) and sited on Hay Hill in the centre of Norwich. This is close to where Browne lived and next to St Peter Mancroft Church where he worshipped and is buried. In 2023, a major refurbishment of Hay Hill meant that the artwork needed to find a new home.

Norwich City Council worked with Friends of Eaton Park to identify a location and now the park is the new home for the artwork *Homage to Thomas Browne*; an intriguing set of sculptures by French artists Anne and Patrick Poirier.

Set out on a five-pointed quincunx pattern, against a backdrop of trees and on a grass carpet, a large eye and a brain preside over giant seed pods and various sized seats



*Aerial view of the artwork in its new home photo (cropped) by Stuart Beard*

inscribed with symbols and words referring to Thomas Browne's written works.

People are free to climb or sit on the granite and marble forms of this outdoor 'living room'!

Browne was a man of many and varied enthusiasms who was curious about the world around him and wrote many books and essays about his thoughts.

'*Homage*' has found its natural resting place in this park where so many Norwich people today enjoy pursuing their own interests and passions. Find the artwork alongside the tree-lined avenues and ponds, crazy golf, ping-pong and much much more in this great city park.

For full details and more information about the park see [www.friendsofeatonpark.co.uk](http://www.friendsofeatonpark.co.uk)

For more on Sir Thomas Browne see [www.sirthomasbrowne.org.uk](http://www.sirthomasbrowne.org.uk)

A large, dark, abstract sculpture of a human figure stands on a vast green lawn. In the background, a grand, multi-story stone building with a prominent dome and many windows is visible under a blue sky with scattered clouds. The scene is set in a park-like environment with trees in the distance.

# ANTONY GORMLEY TIME HORIZON

HOUGHTON HALL  
21 APRIL – 31 OCTOBER

OPEN DAYS AND TICKETS:  
[HOUGHTONHALL.COM](http://HOUGHTONHALL.COM)

SUPPORTED BY:

Thaddaeus Ropac  
London Paris Salzburg Seoul

WHITE CUBE



## PDF EXTRAS!

For each edition of Art in Norwich and Norfolk there are some galleries or events that miss out on being included in the printed version for some reason or another but I still want you, the reader, to have the information so I have added a section that is only available in the pdf version, so keep looking!

# Alfred Cohen Museum and School House Gallery, Wighton, North Norfolk



*The Alfred Cohen Museum, photo copyright Katherine Mager*

This new museum opened in 2023 in the beautiful studios of the American artist who settled in Norfolk. It houses over 70 stunning works painted from the 1950s to the 1990s in Paris, London, and Kent as well as Norfolk.

The museum is next door to the School House Gallery, which last year celebrated 40 years as a leading modern art gallery in Norfolk, exhibiting Norman Ackroyd, Derrick Greaves, David Hockney, Liz Humphries, David Jones, John Kiki, Leslie Marr, Henry Moore, Mary Newcomb, Tessa Newcomb, Sula Rubens, Ivy Smith, Brüer Tidman and many others.

From 4 July 2024 the Museum will also feature a new special exhibition, **COHEN'S POWER FLOWERS**.

Cohen's work is in over 50 public collections including the Sainsbury Centre, Norwich Castle Museum and Art Gallery, Government Art Collection, Arts Council Collection, British Council, and Pallant House.



*The School House Gallery, photo copyright Katherine Mager*

The School House, Wighton, near Wells-next-the-Sea, Norfolk NR23 1AL. Tel. 01328 820457

Museum and Gallery open 11.30am–5.30pm;  
closed on Mondays [www.alfredcohen.org](http://www.alfredcohen.org)

# Norwich Arts *Since 1980* Centre.

The heart of Norwich's cultural community

A packed year-round programme  
of Music, Comedy, Live Art,  
Theatre, Literature *and more*

[norwichartscentre.co.uk](http://norwichartscentre.co.uk)



## Norwich Printing Museum at Blickling Estate



Step into the past at the Norwich Printing Museum (including the John Jarrold Heritage Collection), where the history, machinery and practices of printing and bookbinding are on display. While a large part of our collection is in storage, we have opened a Museum in Residence at the National Trust's Blickling Estate, near Aylsham in Norfolk, where you can see examples of the presses, tools and processes of printing at first hand. We are committed to preserving printing's past, its equipment, skills and knowledge, and offer training and education in printing, print-making, bookbinding and allied crafts, with a focus on the endangered art of letterpress.

Free entry. Open every Friday, Saturday and Sunday, 11am to 3pm, March to October.

The Printing Museum is open:  
11am to 3pm – Fridays, Saturdays & Sundays  
until 27th October, 2024  
and then closed for the winter until March 2025



**NORWICH  
PRINTING  
MUSEUM**



Find out more about the  
Museum and our programme  
of events at  
[norwichprintingmuseum.co.uk](http://norwichprintingmuseum.co.uk)

## East Gallery, Norwich University



East Gallery is a hub for cross-disciplinary practice and research situated at the heart of Norwich University of the Arts and its unique location in the historic city centre of Norwich. East Gallery aims to proactively engage our university community and the wider public by supporting the university's Research and Knowledge Exchange culture through a rigorously curated programme of high-quality, vibrant, and inspiring exhibitions and events, presenting research-led practice generated through the university.

East Gallery actively seeks to develop and support new arts and media research and practice through an inclusive and diverse programme, and providing opportunities to create new work under the East Gallery Fellowships programme each year.

At the time of going to press, there was no information available about forthcoming exhibitions so please keep checking the Norwich University of the Arts website for new information as the Autumn term gets underway.



*Sophie Koko Gate, Milk Bath from spring 2024*

East Gallery, St Andrews Street, Norwich NR2 4AE  
Open Tuesday to Friday 12-5pm | Saturday 12-4pm  
Admission free  
Instagram @eastgallery\_norwichuni



NORWICH SCHOOL

The Crypt Gallery at Norwich School is located in the crypt space below the School Chapel, within the historic Cathedral Close.

A non-commercial gallery for the benefit of the Norwich community celebrating local and national artists across a range of different disciplines.



# The Corn Hall, Diss, South Norfolk



The Corn Hall is a vibrant venue in the heart of the historic market town of Diss on the Norfolk/Suffolk border. It is an impressive Grade II listed building which was originally built in the 19th century as a corn exchange. Nowadays it offers a fabulous range of quality arts entertainment, with two galleries showing international, regional and local art as well as film, theatre, music, talks and much more.

The Corn Hall has an ambitious exhibition programme with past shows including Lucian Freud, Maggi Hambling and Paula Rego as well as exhibitions by emerging and local artists. Call in and enjoy a delicious lunch or homemade cake in the wonderful café too.

The Corn Hall, St Nicholas Street, Diss. Norfolk IP22 4LB  
Box office Tel 01379 652241. [www.thecornhall.co.uk](http://www.thecornhall.co.uk)

## Exhibitions 2024



For our full programme of events and exhibitions, go to [www.thecornhall.co.uk](http://www.thecornhall.co.uk)

## Hungate Medieval Art



Hungate Medieval Art is a charity based in the old parish church of St Peter Hungate on Princes Street, Norwich. Their aim is to keep the building open, to tell its many stories, and help people enjoy and learn about medieval culture in new ways.

This year they are working in partnership with Norwich University of the Arts to show a series of exhibitions from NUA's project Invertlight. The project aims to develop a creative strategy and multimedia content for transforming heritage spaces, in particular sacred spaces. The shows include interactive performative interventions, immersive projections and spatialising art-things.

St Peter Hungate Church, Princes Street, Norwich NR3 1AE  
[www.hungate.org.uk](http://www.hungate.org.uk) Instagram @hungate\_norwich



Above: *Invertlight Test*, Photo: Iuliana Gavril, 2024 © Norwich University of the Arts. Invertlight Project

Left: *St Peter Hungate from the NW* © Hungate

Far left: *Mira Calix's sihlabelela at Hungate*, 2019 © Ralph Salmon

Thursday 21 March to Sunday 23 June 2024

### INVERTLIGHT

#### Easter

PHOTOGRAPHS AND DRAWINGS MADE BY  
PAUL HARLEY AND GLYN BREWERTON

Images for a new book on Norfolk's stained glass

#### August

SCULPTURE BY BOB CATCHPOLE AND DEREK MORRIS

For more information on these shows, talks, other exhibitions and events, please check our website.

Open from late March to October, Saturdays 10am-4pm  
Sundays 1pm-4pm and at other times for special events.  
Hungate is available for hire – please contact us at  
[info@hungate.org.uk](mailto:info@hungate.org.uk)



MOPA have recently settled in their new offices in Upper Goat Lane, Norwich. Hannah Wooller, the founder of MOPA is a qualified conservation architect with over two decades of experience delivering award-winning buildings. She set up MOPA in 2022 as a Community Interest Company.

Hannah is joined by a team of experienced professionals; people passionate about making the change to the design and delivery of buildings required to ensure a sustainable and responsible future for our built environment.

*Did you know that maintenance alone can improve the thermal performance of a traditional building by 20%?*

*"We are creative & conscientious, people-focused consultants who understand the impact that the construction industry has on the environment and believe that going forward, carbon expenditure must be justified by designing for longevity and great functionality."*



Hannah Wooller

## DELIVERING RESPONSIBLE BUILDINGS

MOPA have conservation and technical expertise to help your project respond to the demands of a carbon-conscious future. Buildings and the construction sector are responsible for nearly 40% of carbon emissions. We need to work together to tackle this crisis. Our team can help. We design beautiful solutions that are both climate aware and sympathetic to the function and fabric of your building whatever its age.

## RESEARCH AND RETROFIT

MOPA are developing a neat toolkit to assess how your home is performing thermally and help you target retrofit measures to best improve its efficiency and save money and carbon expenditure.

Please contact us if you are thinking about the environmental impact of your home and want to know more. Email us@[mop-a.co.uk](mailto:mop-a.co.uk)



## Museum of Norwich at the Bridewell



Nestled in the Norwich Lanes, the Bridewell has been a merchant's house, a house of correction, a tobacco warehouse and a shoe factory. Now, the Museum of Norwich tells the stories of the people who helped to create our modern city, from domestic, commercial and industrial, with many fascinating displays inside and, outside, one of the finest examples of a knapped flint wall in the city!

Museum of Norwich at the Bridewell, Bridewell Alley,  
Norwich Norfolk NR2 1AQ  
[www.museums.norfolk.gov.uk/museum-of-norwich](http://www.museums.norfolk.gov.uk/museum-of-norwich)



*Reconstructed pharmacy at the Museum of Norwich*

### KETT'S REBELLION VR EXPERIENCE

Grab a headset and be transported back to August 1549, when Norwich was gripped by rebel forces, fighting to the death against the King's army. Witness first-hand how events unfolded, feel part of the action during hand-to-hand combat in Elm Hill and experience the decisive Battle of Dussindale.

[The VR is free to use, ask at reception](#)

*In partnership with the Wym Trails App and South Norfolk Council*

### MUSEUM OF NORWICH SHOP

With a range of books, work from local makers including Mandy Doubt and Salt Glass Studio, plus small toys and souvenirs, the shop is a great place for gifts, treats and reminders of your visit.

## Strangers' Hall, Norwich



One of Norwich's most historic buildings, this magnificent house has been home to many of the city's leading citizens since the 14th century.

Owned by a series of wealthy merchants, during the 16<sup>th</sup> century the house became known as Strangers' Hall, referring to the 'strangers' who came to work in Norwich as weavers from France, Belgium and the Low Countries. Now as a museum open to the public you can explore rooms furnished in the styles of different historical periods, brought to life with beautiful textiles, domestic objects and creative interpretation.

Strangers' Hall, Charing Cross, Norwich NR2 4AL  
[www.museums.norfolk.gov.uk/strangers-hall](http://www.museums.norfolk.gov.uk/strangers-hall)



### STRANGERS' HALL 100

2023 is the centenary of Strangers' Hall opening its doors as a publicly owned museum. To celebrate this milestone a new artist-designed window display celebrates some of the important figures in the museum's history and new displays and interpretation banners present archive photos and documents in the museum.

Please note that unfortunately, due to the age of Strangers' Hall, not all spaces are completely accessible; please visit our website to find out more before you visit.

Strangers' Hall is open on Wednesdays 10am–4pm and Sundays 1pm–4.30pm

Entry is free with a Norfolk Museums Pass. For more information about the Pass please visit [www.museums.norfolk.gov.uk](http://www.museums.norfolk.gov.uk)



## designermakers21, Diss



Designermakers21 is a craft centre perched at the top of the Heritage Triangle in the middle of Diss in south Norfolk; a rambling 'rabbit warren' of working studios, galleries and exhibitions which is open to the public every Thursday to Saturday 10am-5pm.

Split across numerous working areas, designermakers21 embraces an inspiring range of Craft disciplines including Printmaking, SAORI Weaving, Mosaic, Textiles, Ceramics, Glass, Wood & Metalwork. A busy events programme runs throughout the year promoting education of, and engagement with traditional and contemporary craft.

In January 2023 designermakersCIO (Charitable Incorporated Organisation) launched the 'Save Our Story' fundraising appeal to purchase their premises at 21 St Nicholas Street, and secure the future of the building for generations to come.

One year on and the campaign has been successful in raising the funds to buy the building, backed by grants and community fundraising.

Fundraising work now continues for emergency repairs and urgent upgrading of this beautiful listed building to improve energy efficiency, accessibility and broaden the opportunities on offer.

For more information about designermakers21 and 'Save Our Story' visit [www.designermakers21.co.uk](http://www.designermakers21.co.uk)



21 St Nicholas St, Diss IP22 4LB

## Barrington Farm Art Barn



Barrington Farm is a unique, independent day services centre for adults with learning difficulties, set within a 22-acre site near the North Norfolk coast.

Founded in 1987, the centre includes an organic farm, sensory room and a fully equipped supported art studio known as the Art Barn. The studio caters for most disciplines associated with the visual arts including drawing, painting, printmaking, textiles and sculpture. Many of the artists have exhibited widely and have works in public and private collections.

For more information and access enquiries please contact Sarah Ballard at [roar\\_art@hotmail.com](mailto:roar_art@hotmail.com)  
Instagram: [@roarartarchive](https://www.instagram.com/roarartarchive)  
Facebook: <https://www.facebook.com/barrington.farm/>  
Barrington Farm, Walcott, Norfolk NR12 0PF

### BARRINGTON FARM OPEN STUDIO AUGUST 2024

Open every day from Monday 12 to Friday 2 August, 10am–4pm

Free, all welcome

Artists exhibiting include: *Michael Smith, Saffron Wright, James Gladwell, Hazel Mavin, Sebastian Goschen, Melissa Greenwell, Chris Angell, Barry Skinner and more!*

During our Open Studios we invite you to come and meet our talented artists in their working environment, celebrate their diverse creative practices.

- Exhibitions of recent work with original art for sale
- Weekend opening (17th & 18th Aug, 10am–4pm) with Meet The Artist at 11am and 2pm
- Group bookings by appointment
- Free parking, disabled access and facilities
- Located 15 mins walk from Walcott beach

Founded in 1987, Barrington Farm is a unique day services centre in North Norfolk. Over 30 adults with learning disabilities are supported by a team of 8 artists in the Art Barn studio to make art – from drawing, printmaking, ceramics, painting and textiles. For more info or questions please contact us Tel: 01692 650707 Email: [roar\\_art@hotmail.com](mailto:roar_art@hotmail.com)

**Directions by car / bike:** From Norwich take the A1151 towards Stalham. Just before Stalham turn left and left again towards Walcott / Happisburgh. After a few miles turn left opposite the Lighthouse Inn. Barrington Farm car park and studio is on the right. Follow the signs!

## North of the City – take a walk



*OUTPOST Artists Studios, Gildengate House, Anglia Square*

The north of the city is busy place for new artists and creative businesses. Recently a plan to redevelop Anglia Square Shopping Centre was shelved which means that many artists that have been preparing to move are in limbo whilst a new plan is made. In all cities there is an area which gets a bit run down and property is left empty. As values drop, it becomes feasible for artists and start-up businesses to rent space. In some cases, enlightened developers allow artists to have spaces for 'meanwhile use' until areas can be redeveloped such as St Mary's and St George's Works just off Duke Street where the Shoe Factory Social Club and Lion House are accommodating artists and creative uses.

New galleries and spaces have popped up in Magdalen Street, and all along St Augustine's Street and the Norwich Men's Shed is in Pitt Street off Anglia Square.

Norwich Hackspace, Artpocket, the Royal Drawing School and a range of artists have settled into Lion House Studios in Muspole Street, right opposite the Muspole Street Studios which has accommodated artists and potters for many years.

The Shoe Factory Social Club has regular exhibitions and Coslany Art Space in St Mary Coslany church off Oak Street is being renovated prior to opening a gallery and studios.

Many of the studios in this area offer hands-on sessions in printmaking, pottery, drawing, textiles, illustration and painting as well as accredited degree courses.

Member-led group OUTPOST has run a gallery in Tombland for 18 years and also manages around 80 artist studios in Gildengate House in Anglia Square for now at least. These all give opportunities to emerging artists, students and creatives of all ages.

As well as galleries and art spaces, there are vintage shops, makerspaces and artist shops, ethnic foods, and antiques and collectables in dig-around caverns where you will find interesting bargains and artefacts.

Take a walk along Magdalen Street and find Anteros Arts, the Merchant House Café, Sahara Café, Looses, Dhaba at Fifteen, Aladdin's Cave, the Make Place and much more.

This is definitely an area of the city to have a poke around in and explore – please do!

## Spotlight on...



*Gennadiy Ivanov is an artist, curator, explorer, researcher, eco-activist and gallery owner working in Norwich, Canada and the Arctic Circle*

### GENNADIY IVANOV

Gennadiy Ivanov, also known as Gena, is originally from Bobruisk in Belarus where he worked as an artist and museum curator. Moving to Norwich in 2005, he undertook a fine art degree and MA at the Norwich University of the Arts. With a distinctive and colourful painting style, both figurative and abstract, he became an active member of the Norwich arts scene, selling work through connections, exhibitions and his own studio art gallery in Upper St Giles in Norwich.

Working prolifically and across a range of subjects, he exhibited as part of Norwich Fringe Festival in the Undercroft gallery which led to him curating exhibitions of his own with groups of artists, selected by Gena working to a political theme such as 'War and Peace' 2015, 'Asylum' 2016 and the 'Art of Revolution' 2017.



*Polar bear, stranded*



*Fire across the Ice, oil on canvas*

These exhibitions and their activist style led naturally to an intense interest in climate change and a partnership with the climate research team at UEA and the University of Saskatchewan. Since then, Gennadiy has visited Canada and the Arctic Circle many times, documenting the changes in paint, working 'plein air' often in icy conditions. He has worked tirelessly bringing the reality of global climate change to exhibitions in Norfolk, London, COP26 and the rest of the UK and Canada and is now an integral part of the UEA team. He was recently commissioned to paint a mural for the Council Chamber in City Hall Norwich as a persistent reminder to our politicians of the importance and urgency of climate change and its effect on our lives and our planet.



## Waveney & Blyth Arts



*Our patch*

Waveney and Blyth Arts promotes the rich cultural identity of our patch by supporting the work of artists, musicians, writers and makers. We partner other arts organisations, build connections and commission and present many art forms ourselves.

For over 12 years the organisation's members have been able to use our website to promote their work, find out what's going on in the arts community round here and of course network. There's a newsletter, a jobs and opportunities bulletin, and members are listed in our creative directory. We are a registered charity, which means we can both attract funding and distribute small grants.



*Work by Tobias Ford from the 2022 Sculpture in the Valley at Potton Hall,*

Over the years we have organised exhibitions, markets, talks, sculpture trails, guided walks, workshops, performances and environmental arts projects. And members get a discount on the events we charge for.

You don't have to be an artist to become a member: sign up (£20 a year) and you'll be supporting the whole enterprise and helping us programme events.

To find out about events keep an eye on our website. There is a focus on three areas – artists' and makers' markets; books, poetry and illustration; and walks. .

All this and more – on [www.waveneyandblytharts.com](http://www.waveneyandblytharts.com)

Facebook [WaveneyBlythArts](https://www.facebook.com/WaveneyBlythArts)

Twitter: [@waveneyblyth](https://twitter.com/waveneyblyth)

Instagram: [@waveneyandblytharts](https://www.instagram.com/waveneyandblytharts)

## Spotlight on....



*Known collectively as The Pauls aka Contemporary and Country, they are hosts, artists, curators and designers*

### PAUL BARRATT AND PAUL VATER

Paul and Paul are a partnership of multi-talented creatives, curating exhibitions showcasing the work of artists, designers and craftspeople from across the Eastern region of England to an ever-expanding audience both regionally, nationally and overseas, Paul Barratt and Paul Vater are both well-known and well-loved across Norfolk.

Frequently found accompanying the major annual sculpture exhibitions at Houghton Hall with an exhibition in The Stables, they also keep an eye out for interesting pop-up locations wherever they can be found – the Granary furniture shop in Norwich, Creake Abbey in North Norfolk, St George's Guildhall in King's Lynn and BallroomArts in Aldeburgh, Suffolk.



*The Stables at Houghton Hall*



*Installing at Creake Abbey, near Burnham Market*

As Contemporary and Country, they champion artists and makers who work with natural materials and celebrate the rural counties of Norfolk, Suffolk, Essex, Cambridgeshire and Lincolnshire in a contemporary and eco-sensitive way, sourcing sustainable materials and exploring issues around coastal land use and ecological concerns found in the east of England. Many of these issues are also shared by creative practitioners working in rural communities in other parts of the UK. Their exhibitions and events provide a forum for these issues, bringing attention to the creative people they work with, facilitating greater understanding of their work and production process.

The pair live in the market town of Aylsham where they also run a boutique B&B called Tinsmiths House, in a former industrial workshop, a beautiful place to stay when visiting the region and its cultural highlights.

## Spotlight on...



*Veronica Sekules is director of GroundWork Gallery in King's Lynn, and a writer, art historian, curator, educator, artisan.*

### VERONICA SEKULES

Founder and director of GroundWork Gallery in King's Lynn, West Norfolk is not only all of the above but is also a life-long activist for the environment. After a long career in both art history and environmentalism, with 30 years at the Sainsbury Centre of Visual Art, and 18 as head of education and research, Veronica took the bold step of setting up GroundWork Gallery, a private venture. It is one of the handful of contemporary art galleries solely dedicated to art and the environment, and to building the cultural reputation of King's Lynn. Since 2016, Veronica has curated and hosted at least three exhibitions a year, each with a very strong theme addressing a key environmental issue and including seminars and artist events alongside.



*Veronica with Colette Parker Anglian Water and Wells Harbourmaster Robert Smith*



*A gallery exhibition with Richard Long's work River Ouse Mud in the background and hand-blown glass bottles by Stewart Hearn in the foreground*

In 2024 she is concentrating on a year of residencies, exhibitions and projects with linked by an overall theme. Veronica's unique approach means that she takes each theme both deeper and wider, using and choosing art that helps to reveal and expose environmental issues of the day in a way that feels genuinely enlightening and not like being preached to. Exhibitions and creative programmes explore how art can enable us to respond to the changing environment and imagine how we can shape its future. Recent exhibitions have covered Water, Extraction and most recently Waste. Veronica shows the work of contemporary artists who care about how we see the world, bringing them from Europe as well as involving artists based locally in Norfolk to the beautifully designed contemporary gallery space by the river Ouse in King's Lynn.

## Spotlight on...



*Kaavous Clayton and Julia Devonshire are original projects; artists, activists, curators and cultural producers working in Great Yarmouth*

### **ORIGINAL PROJECTS: KAAVOUS CLAYTON AND JULIA DEVONSHIRE**

Kaavous is an artist-curator. He has worked as a gallery and project curator for public and cross-county projects in the eastern region. He has been involved in the development of community-focused initiatives that provide space for locals to share thinking, test ideas and exchange knowledge, leading to stronger and more vibrant communities that are more resilient, independent and better able to support themselves in the delivery of ambitious home-grown projects.

Julia is a cultural producer. She has worked in contemporary art, heritage and cultural development roles across East Anglia's public sector, academic and artist-led settings. Her place-based practice supports grassroots, culture-led regeneration activity and



Ryan Gander at Merrivale Model Village



Yarmonics at The Empire



Bill Drummond 'Who Ate My Uncle' at PrimeYarc, a former Debenhams store

enterprise, and seeks to broker innovative linkages between ideas, people and initiatives, whilst championing and supporting the development of local talent.

Since 2016, they have been working with communities and artists in Great Yarmouth, and have developed a distinctive approach to explore relationships between generosity, creativity and place. Their projects unlock creative opportunities for people to learn new skills, build confidence and thrive through experiencing sustainable and pioneering great art.

They are well-connected with artist communities across the country and bring exciting new work to the town, such as Jimmy Cauty's dystopian world shipping container at the (Dis)Pleasure Beach and YARMONICS, an annual festival of sound and new music, alongside exhibitions, talks and events at various venues including PrimeYarc, a base in a former Debenhams store in the heart of the town centre shopping area (see page 38). They also offer affordable and accessible studio space to artists and community groups.

## Breckland Artists



*Sonia Dobbs-Orr*

Established in 2002 Breckland Artists have been exhibiting together regularly both in Norwich and in other locations around Norfolk. The group currently has 9 members that include founder members Roger and Chris Gamble and Jill Arnold. Lyn Aylward, Jill Sharpe and Sonia Dobbs-Orr have exhibited with the group for many years and the most recently joined members are Alan Porter, Rachel Furze and Gill Thornton.

Working in many different disciplines the members of Breckland Artists use their observational skills to interpret the world around them. Works in paint, pastel, sculpture, photography, print and textiles come together to present their different interpretations and to create pieces of work that represent their own particular viewpoint.

## Exhibitions 2024

Tuesday 6 to Saturday 10 August  
The Crypt Gallery, Cathedral Close,  
Tombland, Norwich NR1 4DD

**BRECKLAND ARTISTS GROUP SHOW**



*Alan Porter*



*Above: Chris Gamble*

*Left: Lyn Aylward*



**SATURDAYS**  
**11 – 4pm**

**[www.Greenhousetrust.net](http://www.Greenhousetrust.net)**

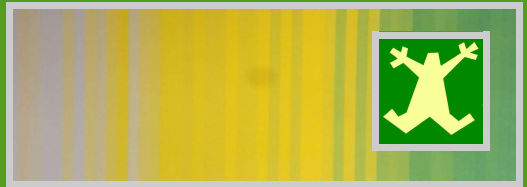
**42 - 46 Bethel Street Norwich NR2 1NR**





**The stripes represent biodiversity collapse from 1970 to 2018 The highest level of biodiversity is coloured bright green. Collapsing levels move from yellow to grey**

## **TREES FOR NORWICH**



**LET'S TURN THE NATURE AND CLIMATE CRISES AROUND**



# Head East

The East of England offers some of the best culture and arts in the UK.

We're home to nationally and internationally renowned festivals, theatres, museums, venues and touring companies. We're also the place where world-class talent is celebrated, made and nurtured.

Head East is a comprehensive web-based guide to the excellent arts and culture available in Norfolk and Suffolk hosted by Visit East of England

Head East for inspirational itineraries, interviews and cultural highlights featured on [visiteastofengland.com](http://visiteastofengland.com)

To stay up to date, subscribe to the newsletter and follow the news on social media by searching [@headeastuk](https://twitter.com/headeastuk) and [#headeastuk](https://www.instagram.com/headeastuk).

Autumn/Winter 2024/2025

# ART & CULTURE IN NORWICH & NORFOLK

ART IN NORWICH  
ART IN NORFOLK  
ART IN NORWICH\*

A directory and round-up of exhibitions and events and a guide to getting the best out of a visit to Norwich and Norfolk



Norwich, a very fine cultural city in  
a beautiful county, best explore it!



Shift Norwich

Art in Norwich is produced by The Shift Norwich  
and Norwich Visual Art Forum  
[www.artinnorwich.org.uk](http://www.artinnorwich.org.uk)



Art in Norwich